



EXCEL ENGINEERING COLLEGE (Autonomous)

Approved by AICTE, New Delhi & Affiliated to Anna University, Chennai
Accredited by NBA (AERO, CSE, ECE, MECII), NAAC with "A+" and Recognised by UGC (2f & 12B)
KOMARAPALAYAM-637 303

DEPARTMENT OF MCA

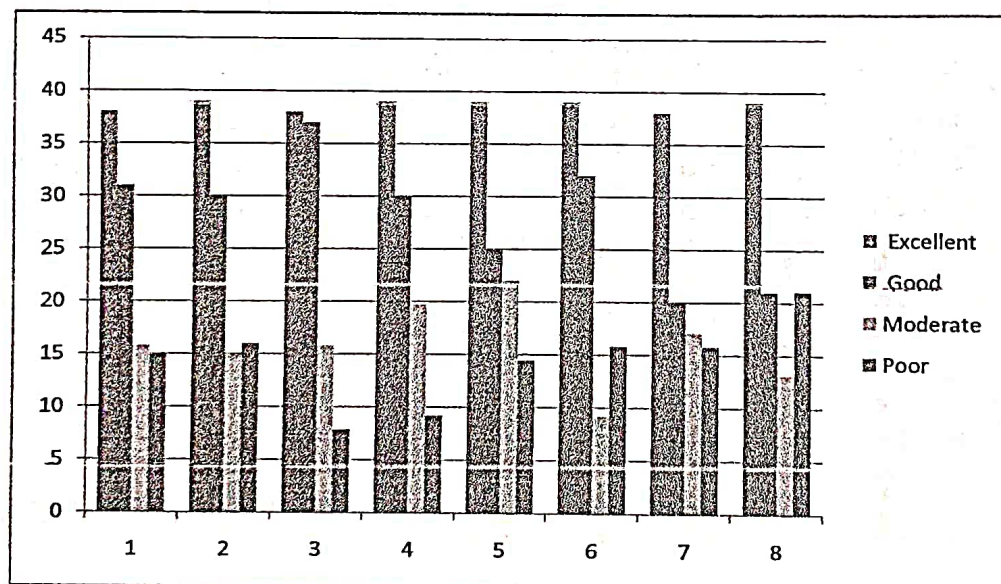
Academic Year 2022-2023

CONSOLIDATED SYLLABUS REVIEW FEEDBACK FORM : STUDENTS

EEC /MCA / 2022-23

Year /Sem : I/I

No of Responses : 74		No of Subjects : 7		Feedback in Percentage			
S.No	Descriptions	Excellent	Good	Moderate	Poor		
1	What is the Depth of the syllabus content ?	38	31	16	15		
2	Whether Syllabus is carrier oriented?	39	30	15	16		
3	Whether the course was well Structured to achieve course outcomes?	38	37	16	8		
4	Rate the size of the syllabus in terms of students load	39	30	20	9		
5	Whether Course objective is clear ?	39	25	22	14		
6	Are the books prescribed as a text book/ Reference book in related to syllabus	39	32	9	16		
7	Whether syllabus is relevant to real word problems?	38	20	17	16		
8	Whether the syllabus is covered with industry standards?	39	21	13	21		



N. Deepthi
Academic Coordinator



G. S. Srinivas
HOD



EXCEL ENGINEERING COLLEGE

(Autonomous)

Approved by AICTE, New Delhi & Affiliated to Anna University, Chennai

Accredited by NBA (AERO, CSE, ECE, MECH), NAAC with "A+" and Recognised by UGC (2f & 12B)

KOMARAPALAYAM-637 303

DEPARTMENT OF MCA

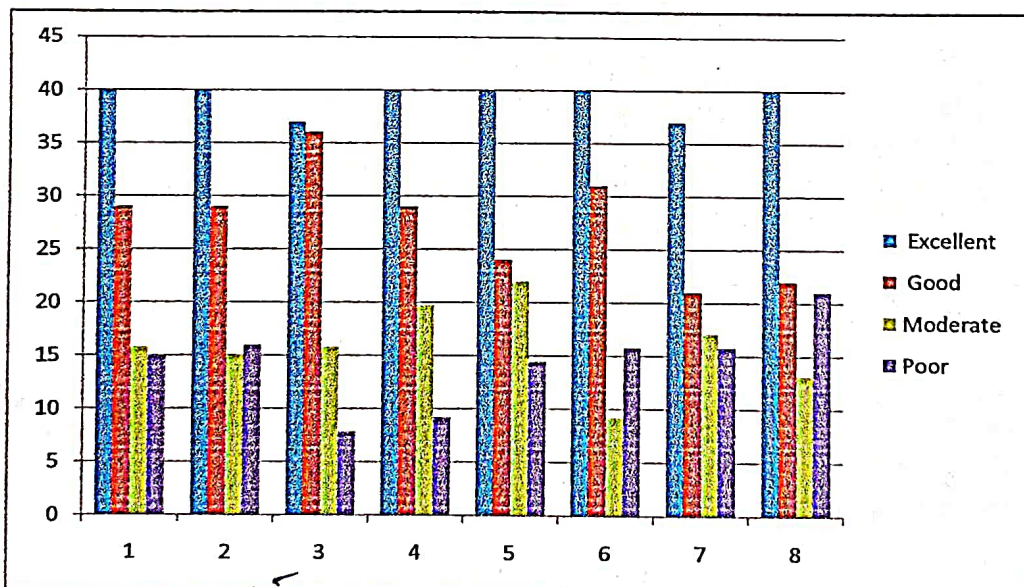
Academic Year 2022-2023

CONSOLIDATED SYLLABUS REVIEW FEEDBACK FORM : STUDENTS

EEC /MCA / 2022-23

Year /Sem : I/II

No of Responses : 75		No of Subjects : 7		Feedback in Percentage			
S.No	Descriptions	Excellent	Good	Moderate	Poor		
1	What is the Depth of the syllabus content ?	40	29	16	15		
2	Whether Syllabus is carrier oriented?	40	29	15	16		
3	Whether the course was well Structured to achieve course outcomes?	37	36	16	8		
4	Rate the size of the syllabus in terms of students load	40	29	20	9		
5	Whether Course objective is clear?	40	24	22	14		
6	Are the books prescribed as a text book/ Reference book in related to syllabus	40	31	9	16		
7	Whether syllabus is relevant to real word problems?	37	21	17	16		
8	Whether the syllabus is covered with industry standards?	40	22	13	21		



Academic Coordinator

HOD





EXCEL ENGINEERING COLLEGE

(Autonomous)

Approved by AICTE, New Delhi & Affiliated to Anna University, Chennai

Accredited by NBA (AERO, CSE, ECE, MECII), NAAC with "A+" and Recognised by UGC (2f & 12B)

KOMARAPALAYAM-637 303

DEPARTMENT OF MCA

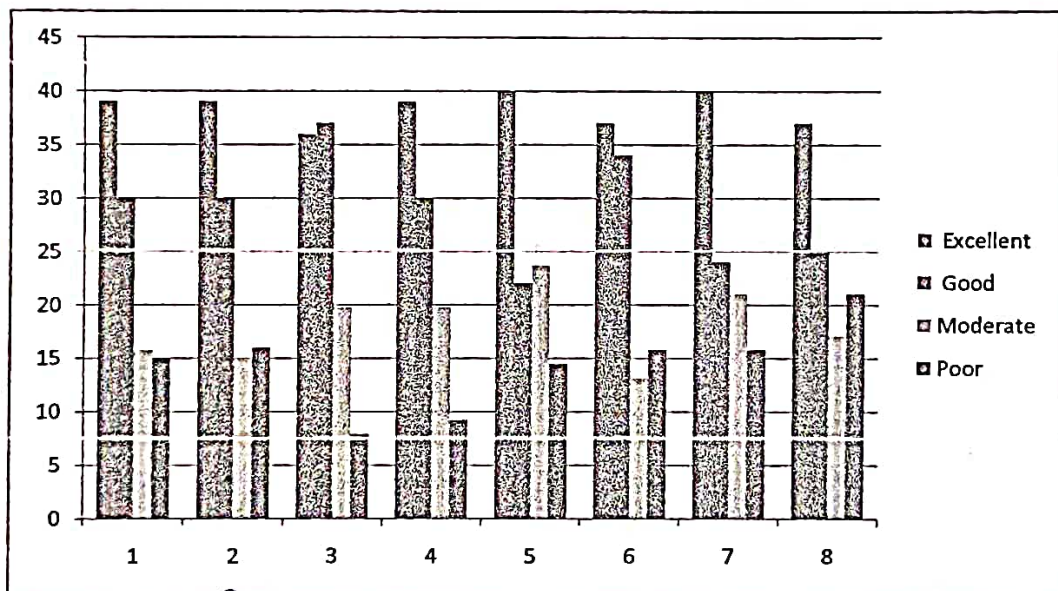
Academic Year 2022-2023

CONSOLIDATED SYLLABUS REVIEW FEEDBACK FORM : STUDENTS

EEC /MCA / 2022-23

Year /Sem : II/III

No of Responses : 78		No of Subjects : 7		Feedback in Percentage			
S.No	Descriptions	Excellent	Good	Moderate	Poor		
1	What is the Depth of the syllabus content ?	39	30	16	15		
2	Whether Syllabus is carrier oriented?	39	30	15	16		
3	Whether the course was well Structured to achieve course outcomes?	36	37	20	8		
4	Rate the size of the syllabus in terms of students load	39	30	20	9		
5	Whether Course objective is clear ?	40	22	24	14		
6	Are the books prescribed as a text book/ Reference book in related to syllabus	37	34	13	16		
7	Whether syllabus is relevant to real word problems?	40	24	21	16		
8	Whether the syllabus is covered with industry standards?	37	25	17	21		



Academic Coordinator

HOD





EXCEL ENGINEERING COLLEGE

(Autonomous)

Approved by AICTE, New Delhi & Affiliated to Anna University, Chennai

Accredited by NBA (AERO, CSE, ECE, MECII), NAAC with "A+" and Recognised by UGC (2f & 12B)

KOMARAPALAYAM-637 303

DEPARTMENT OF MCA

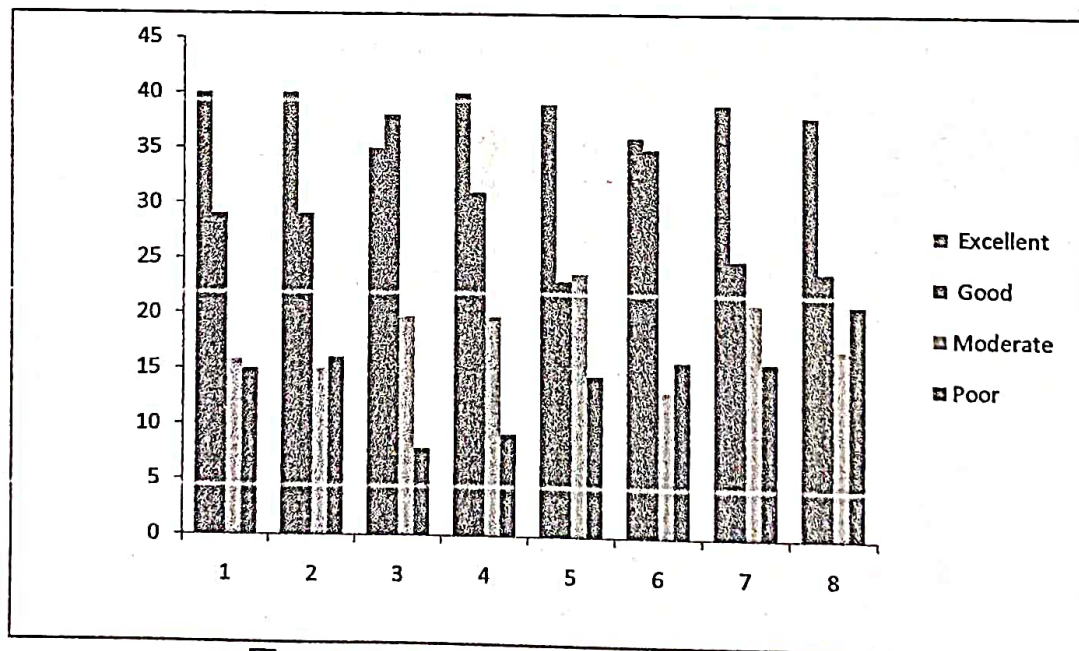
Academic Year 2022-2023

CONSOLIDATED SYLLABUS REVIEW FEEDBACK FORM : STUDENTS

EEC /MCA / 2022-23

Year /Sem : II/IV

No of Responses : 77		No of Subjects : 1		Feedback in Percentage			
S.No	Descriptions	Excellent	Good	Moderate	Poor		
1	What is the Depth of the syllabus content ?	40	29	16	15		
2	Whether Syllabus is carrier oriented?	40	29	15	16		
3	Whether the course was well Structured to achieve course outcomes?	35	38	20	8		
4	Rate the size of the syllabus in terms of students load	40	31	20	9		
5	Whether Course objective is clear ?	39	23	24	14		
6	Are the books prescribed as a text book/ Reference book in related to syllabus	36	35	13	16		
7	Whether syllabus is relevant to real word problems?	39	25	21	16		
8	Whether the syllabus is covered with industry standards?	38	24	17	21		



N. Deepash
Academic Coordinator

G. Gnanam
HOD





EXCEL ENGINEERING COLLEGE

(Autonomous)

Approved by AICTE, New Delhi & Affiliated to Anna University, Chennai
Accredited by NBA (AERO, CSE, ECE, MECH), NAAC with "A+" and Recognised by UGC
(2f & 12B)

KOMARAPALAYAM-637 303

DEPARTMENT OF MCA

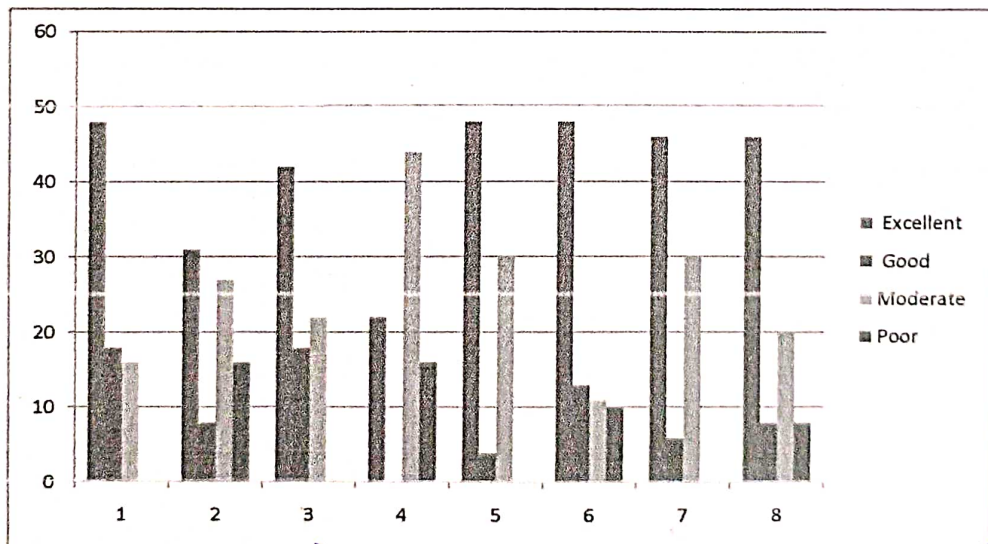
Academic Year 2022-2023

CONSOLIDATED SYLLABUS REVIEW FEEDBACK FORM : FACULTY

EEC / MCA / 2022-23

Year / Sem : I/I

No of Faculty Responses : 18		Feedback in Percentage			
S.No	Descriptions	Excellent	Good	Moderate	Poor
1	Is the course objectives are illustrated clearly to the need of the students?	48	18	16	0
2	Are you satisfy the existing syllabus which you are handling?	31	8	27	16
3	Is the syllabus designed based on average students level?	42	18	22	0
4	Is the syllabus provided the basic knowlledge to carry out the field project/internship.	22	0	44	16
5	Is the prerequest for the syllabus avilable in the curriculam?	48	4	30	0
6	Is the syllabus well organized and easy to follow by the students?	48	13	11	10
7	Is the syllabus covered fundametals,advanced topics and ensures balance between theory & applications.	46	6	30	0
8	Is the text and Reference books prescribed in the syllabus is standard or not?	46	8	20	8



Academic Coordinator

HOD





EXCEL ENGINEERING COLLEGE

(Autonomous)

Approved by AICTE, New Delhi & Affiliated to Anna University, Chennai
Accredited by NBA (AERO, CSE, ECE, MECII), NAAC with "A+" and Recognised by UGC
(2f & 12B)

KOMARAPALAYAM-637 303

DEPARTMENT OF MCA

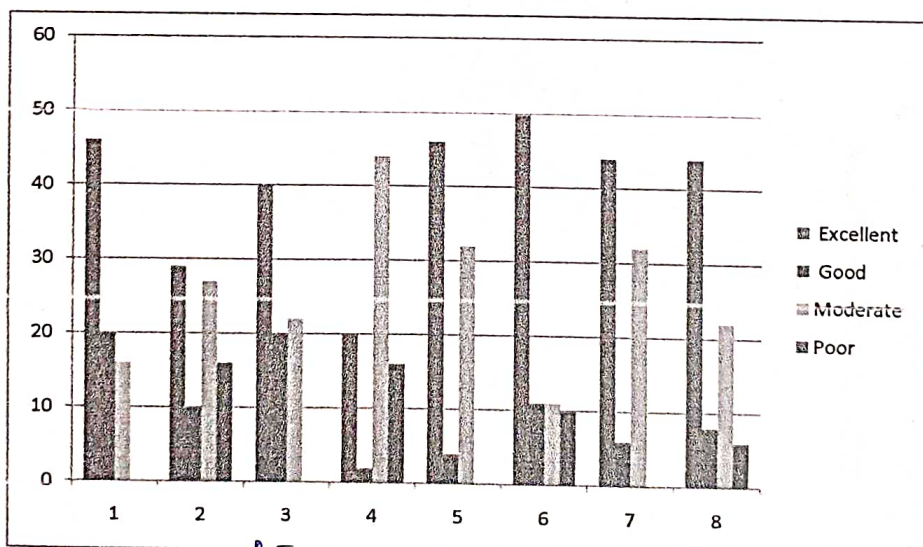
Academic Year 2022-2023

CONSOLIDATED SYLLABUS REVIEW FEEDBACK FORM : FACULTY

EEC / MCA/ 2022-23

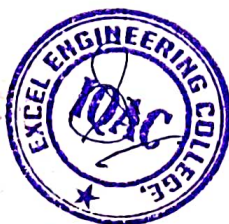
Year /Sem : I/II

No of Faculty Responses : 17		Feedback in Percentage			
S.No	Descriptions	Excellent	Good	Moderate	Poor
1	Is the course objectives are illustrated clearly to the need of the students?	46	20	16	0
2	Are you satisfy the existing syllabus which you are handling?	29	10	27	16
3	Is the syllabus designed based on average students level?	40	20	22	0
4	Is the syllabus provided the basic knowlledge to carry out the field project/internship.	20	2	44	16
5	Is the prerequest for the syllabus avilable in the curriculam?	46	4	32	0
6	Is the syllabus well organized and easy to follow by the students?	50	11	11	10
7	Is the syllabus covered fundametals,advanced topics and ensures balance between theory & applications.	44	6	32	0
8	Is the text and Reference books prescribed in the syllabus is standard or not?	44	8	22	6



Academic Coordinator

HOD





EXCEL ENGINEERING COLLEGE

(Autonomous)

Approved by AICTE, New Delhi & Affiliated to Anna University, Chennai
Accredited by NBA (AERO, CSE, ECE, MECH), NAAC with "A+" and Recognised by UGC
(2f & 12B)

KOMARAPALAYAM-637 303

DEPARTMENT OF MCA

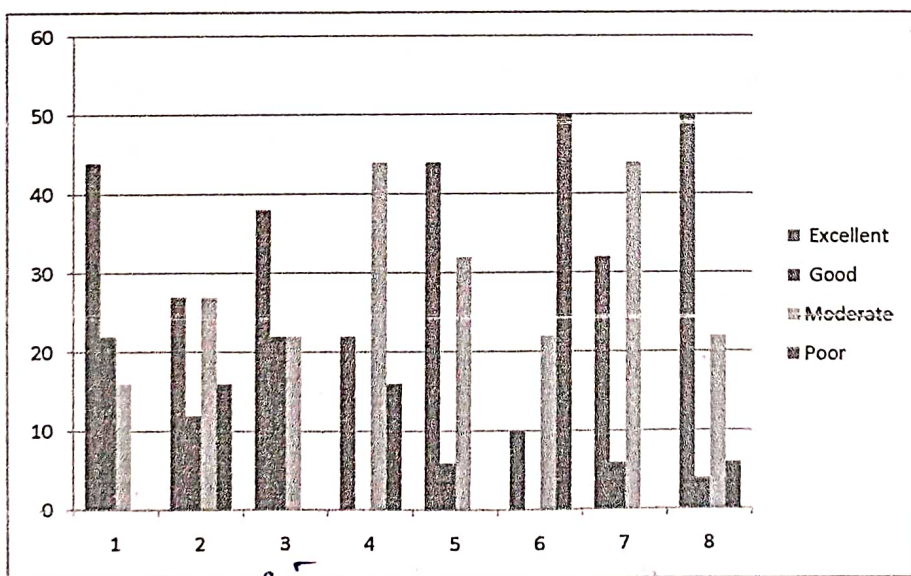
Academic Year 2022-2023

CONSOLIDATED SYLLABUS REVIEW FEEDBACK FORM : FACULTY

EEC / MCA/ 2022-23

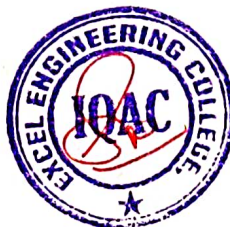
Year /Sem : II/III

S.No	Descriptions	Feedback in Percentage			
		Excellent	Good	Moderate	Poor
1	Is the course objectives are illustrated clearly to the need of the students?	44	22	16	0
2	Are you satisfy the existing syllabus which you are handling?	27	12	27	16
3	Is the syllabus designed based on average students level?	38	22	22	0
4	Is the syllabus provided the basic knowlledge to carry out the field project/internship.	22	0	44	16
5	Is the prerequest for the syllabus avilable in the curriculam?	44	6	32	0
6	Is the syllabus well organized and easy to follow by the students?	10	0	22	50
7	Is the syllabus covered fundametals,advanced topics and ensures balance between theory & applications.	32	6	44	0
8	Is the text and Reference books prescribed in the syllabus is standard or nor?	50	4	22	6



Academic Coordinator

HOD





EXCEL ENGINEERING COLLEGE

(Autonomous)

Approved by AICTE, New Delhi & Affiliated to Anna University, Chennai
Accredited by NBA (AERO, CSE, ECE, MECII), NAAC with "A+" and Recognised by UGC
(2f & 12B)

KOMARAPALAYAM-637 303

DEPARTMENT OF MCA

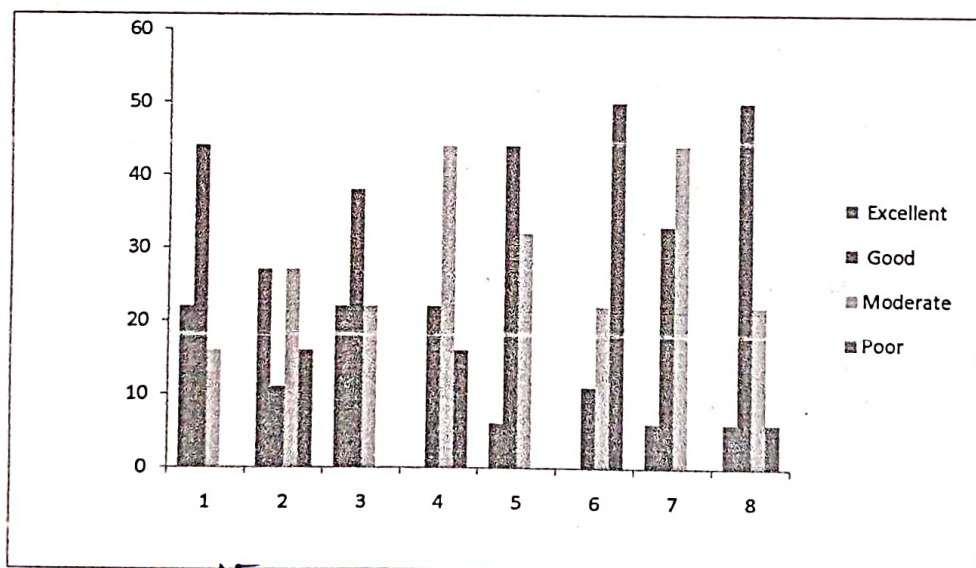
Academic Year 2022-2023

CONSOLIDATED SYLLABUS REVIEW FEEDBACK FORM : FACULTY

EEC / MCA/ 2022-23

Year /Sem : II/IV

No of Faculty Responses : 15		Feedback in Percentage			
S.No	Descriptions	Excellent	Good	Moderate	Poor
1	Is the course objectives are illustrated clearly to the need of the students?	22	44	16	0
2	Are you satisfy the existing syllabus which you are handling?	27	11	27	16
3	Is the syllabus designed based on average students level?	22	38	22	0
4	Is the syllabus provided the basic knowlledge to carry out the field project/internship.	0	22	44	16
5	Is the prerequest for the syllabus available in the curriculam?	6	44	32	0
6	Is the syllabus well organized and easy to follow by the students?	0	11	22	50
7	Is the syllabus covered fundametals,advanced topics and ensures balance between theory & applications.	6	33	44	0
8	Is the text and Reference books prescribed in the syllabus is standard or not?	6	50	22	6



Academic Coordinator

HOD





EXCEL ENGINEERING COLLEGE

(Autonomous)

Approved by AICTE, New Delhi & Affiliated to Anna University, Chennai
Accredited by NBA (AERO, CSE, ECE, MECH), NAAC with "A+" and Recognised by UGC (2f & 12B)
KOMARAPALAYAM – 637303

Department of MCA

Academic Year 2022-23

SYLLABUS REVIEW FEEDBACK FORM: ALUMNI

Name of the Alumni: POOVARATHANAN M

Date: 23/08/23

Current Employability: TEXTILE & CLOTHING

Batch: 2021-23

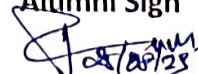
Regulation of study: 2021

S.No	Descriptions	Rating
1	Was the courses well structured to achieve course outcomes?	4
2	Did the courses enable to build your future career?	5
3	Has the courses enable the skills required by the industry?	4
4	Rate the depth of knowledge about the courses.	5
5	Are the courses sufficient to enable the students to analyze and identify the necessary solutions?	4
6	Rate the syllabus and curriculum?	5
7	Are the relevant books prescribed for reference/text?	4

Feedback Rate: Excellent - 4, Good - 3, Moderate - 2, Poor - 1

Suggestions for further Improvement

Alumni Sign


23/08/23



PEXCEL ENGINEERING COLLEGE

(Autonomous)

Approved by AICTE, New Delhi & Affiliated to Anna University, Chennai
Accredited by NBA (AERO, CSE, ECE, MECH), NAAC with "A+" and Recognised by UGC (2f & 12B)
KOMARAPALAYAM – 637303

Department of MCA

Academic Year 2022-2023

SYLLABUS REVIEW FEEDBACK FORM: ALUMNI

Name of the Alumni: RAJUPATHI.P.

Date: 24/9/23

Current Employability: Bank Accountant

Batch: 2021-2023

Regulation of study: 2021

S.No	Descriptions	Rating
1	Was the courses well structured to achieve course outcomes?	4
2	Did the courses enable to build your future career?	5
3	Has the courses enable the skills required by the industry?	4
4	Rate the depth of knowledge about the courses.	4
5	Are the courses sufficient to enable the students to analyze and identify the necessary solutions?	3
6	Rate the syllabus and curriculum?	5
7	Are the relevant books prescribed for reference/text?	4

Feedback Rate: Excellent - 4, Good - 3, Moderate - 2, Poor - 1

Suggestions for further Improvement

Alumni Sign

Rajupathi.P.



PEXCEL ENGINEERING COLLEGE
(Autonomous)

Approved by AICTE, New Delhi & Affiliated to Anna University, Chennai
Accredited by NBA (AERO, CSE, ECE, MECH), NAAC with "A+" and Recognised by UGC (2f & 12B)
KOMARAPALAYAM – 637303

Department of NICA

Academic Year 2022 – 2023

SYLLABUS REVIEW FEEDBACK FORM: ALUMNI

Name of the Alumni: ABIMANYU. K

Date: 25/8/23.

Current Employability: BSNL, FTTH

Batch: 2021 to 2023

Regulation of study: 2021

S.No	Descriptions	Rating
1	Was the courses well structured to achieve course outcomes?	4
2	Did the courses enable to build your future career?	4
3	Has the courses enable the skills required by the industry?	3
4	Rate the depth of knowledge about the courses.	4
5	Are the courses sufficient to enable the students to analyze and identify the necessary solutions?	3
6	Rate the syllabus and curriculum?	4
7	Are the relevant books prescribed for reference/text?	4

Feedback Rate: Excellent - 4, Good - 3, Moderate - 2, Poor – 1

Suggestions for further Improvement


Alumni Sign



PEXCEL ENGINEERING COLLEGE

(Autonomous)

Approved by AICTE, New Delhi & Affiliated to Anna University, Chennai
Accredited by NBA (AERO, CSE, ECE, MECH), NAAC with "A+" and Recognised by UGC (2f & 12B)
KOMARAPALAYAM – 637303

Department of MCA

Academic Year 2022-23

SYLLABUS REVIEW FEEDBACK FORM: ALUMNI

Name of the Alumni: YOGESHWARA BALAJI.S

Date: 25/8/23

Current Employability: TEXTILES BUSINESS

Batch:

Regulation of study: 2021

S.No	Descriptions	Rating
1	Was the courses well structured to achieve course outcomes?	4
2	Did the courses enable to build your future career?	3
3	Has the courses enable the skills required by the industry?	4
4	Rate the depth of knowledge about the courses.	4
5	Are the courses sufficient to enable the students to analyze and identify the necessary solutions?	3
6	Rate the syllabus and curriculum?	4
7	Are the relevant books prescribed for reference/text?	3

Feedback Rate: Excellent - 4, Good - 3, Moderate - 2, Poor – 1

Suggestions for further Improvement


Alumni Sign



EXCEL ENGINEERING COLLEGE

(Autonomous)

Approved by AICTE, New Delhi & Affiliated to Anna University, Chennai
Accredited by NBA (AERO, CSE, ECE, MECH), NAAC with "A+" and Recognised by UGC (2f & 12B)

KOMARAPALAYAM – 637303

Department of MCA

Academic Year 2022-23

SYLLABUS REVIEW FEEDBACK FORM: STUDENT

Class / Sem / Year / Section: I yr / I SEM

Date: 4/1/2023

S.No	Descriptions	Rating
1	What is the Depth of the syllabus content?	4
2	Whether Syllabus is carrier oriented?	4
3	Whether the course was well Structured to achieve course outcomes?	3
4	Rate the size of the syllabus in terms of students load	4
5	Whether Course objective is clear?	3
6	Are the books prescribed as a text book/ Reference book in related to syllabus?	3
7	Whether syllabus is relevant to real word problems?	4
8	Whether the syllabus is covered with industry standards?	4

Feedback Rate: Excellent - 4, Good - 3, Moderate - 2, Poor - 1

Suggestions for further Improvement

M. Rajkumar

Student Sign



EXCEL ENGINEERING COLLEGE
(Autonomous)

Approved by AICTE, New Delhi & Affiliated to Anna University, Chennai
Accredited by NBA (AERO, CSE, ECE, MECH), NAAC with "A*" and Recognised by UGC (2f & 12B)

KOMARAPALAYAM – 637303

Department of MCA

Academic Year 2022-23

SYLLABUS REVIEW FEEDBACK FORM: STUDENT

Class / Sem / Year / Section: I year / I Sem

Date: 5/4/2023

S.No	Descriptions	Rating
1	What is the Depth of the syllabus content?	4
2	Whether Syllabus is carrier oriented?	4
3	Whether the course was well Structured to achieve course outcomes?	3
4	Rate the size of the syllabus in terms of students load	3
5	Whether Course objective is clear?	4
6	Are the books prescribed as a text book/ Reference book in related to syllabus?	3
7	Whether syllabus is relevant to real word problems?	3
8	Whether the syllabus is covered with industry standards?	4

Feedback Rate: Excellent - 4, Good - 3, Moderate - 2, Poor - 1

Suggestions for further Improvement

M. S. S. S.

Student Sign



EXCEL ENGINEERING COLLEGE

(Autonomous)

Approved by AICTE, New Delhi & Affiliated to Anna University, Chennai
Accredited by NBA (AERO, CSE, ECE, MECH), NAAC with "A*" and Recognised by UGC (2f & 12B)

KOMARAPALAYAM – 637303

Department of MCA

Academic Year 2022-23

SYLLABUS REVIEW FEEDBACK FORM: STUDENT

Class / Sem / Year / Section: IInd / IIIrd SEM

Date: 9/11/2023

S.No	Descriptions	Rating
1	What is the Depth of the syllabus content?	4
2	Whether Syllabus is carrier oriented?	3
3	Whether the course was well Structured to achieve course outcomes?	4
4	Rate the size of the syllabus in terms of students load	4
5	Whether Course objective is clear?	3
6	Are the books prescribed as a text book/ Reference book in related to syllabus?	3
7	Whether syllabus is relevant to real word problems?	4
8	Whether the syllabus is covered with industry standards?	4

Feedback Rate: Excellent - 4, Good - 3, Moderate - 2, Poor – 1

Suggestions for further Improvement

M. S. J.
Student Sign



EXCEL ENGINEERING COLLEGE

(Autonomous)

Approved by AICTE, New Delhi & Affiliated to Anna University, Chennai
Accredited by NBA (AERO, CSE, ECE, MECH), NAAC with "A+" and Recognised by UGC (2f & 12B)

KOMARAPALAYAM – 637303

Department of MCA

Academic Year 2022-23

SYLLABUS REVIEW FEEDBACK FORM: STUDENT

Class / Sem / Year / Section: II yr / IV SEM

Date: 5/4/2023

S.No	Descriptions	Rating
1	What is the Depth of the syllabus content?	4
2	Whether Syllabus is carrier oriented?	4
3	Whether the course was well Structured to achieve course outcomes?	4
4	Rate the size of the syllabus in terms of students load	3
5	Whether Course objective is clear?	3
6	Are the books prescribed as a text book/ Reference book in related to syllabus?	4
7	Whether syllabus is relevant to real word problems?	3
8	Whether the syllabus is covered with industry standards?	4

Feedback Rate: Excellent - 4, Good - 3, Moderate - 2, Poor – 1

Suggestions for further Improvement


Student Sign



EXCEL ENGINEERING COLLEGE

(Autonomous)

Approved by AICTE, New Delhi & Affiliated to Anna University, Chennai
Accredited by NBA (AERO, CSE, ECE, MECH), NAAC with "A+" and Recognised by UGC (2f & 12B)

KOMARAPALAYAM – 637303

Department of MCA

Academic Year 2022-23

SYLLABUS REVIEW FEEDBACK FORM: FACULTY

Name of the Faculty

: M. Deepashri

Date: 05.04.2023

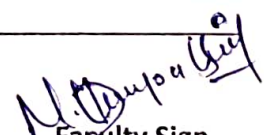
Designation

: Assistant Professor.

S.No	Descriptions	Rating
1	Is the course objectives are illustrated clearly to the need of the students?	4
2	Are you satisfying the existing syllabus which you are handling?	3
3	Is the syllabus designed based on average student's level?	3
4	Is the syllabus provided the basic knowledge to carry out the field project/internship	4
5	Is the prerequisite for the syllabus available in the curriculum?	4
6	Is the syllabus well organized and easy to follow by the students?	3
7	Is the syllabus covered fundamentals, advanced topics and ensures balance between theory & applications	4
8	Is the text and Reference book prescribed in the syllabus is standard or not?	3

Feedback Rate: Excellent - 4, Good - 3, Moderate - 2, Poor - 1

Suggestions for further Improvement


Faculty Sign



EXCEL ENGINEERING COLLEGE

(Autonomous)

Approved by AICTE, New Delhi & Affiliated to Anna University, Chennai
Accredited by NBA (AERO, CSE, ECE, MECH), NAAC with "A+" and Recognised by UGC (2f & 12B)

KOMARAPALAYAM - 637303

Department of MCA

Academic Year 2022-23

SYLLABUS REVIEW FEEDBACK FORM: FACULTY

Name of the Faculty

: Dr. M. Gomathi

Date: 5/4/2023

Designation

: Assistant Professor

S.No	Descriptions	Rating
1	Is the course objectives are illustrated clearly to the need of the students?	3
2	Are you satisfying the existing syllabus which you are handling?	4
3	Is the syllabus designed based on average student's level?	3
4	Is the syllabus provided the basic knowledge to carry out the field project/internship	4
5	Is the prerequisite for the syllabus available in the curriculum?	3
6	Is the syllabus well organized and easy to follow by the students?	4
7	Is the syllabus covered fundamentals, advanced topics and ensures balance between theory & applications	4
8	Is the text and Reference book prescribed in the syllabus is standard or not?	4

Feedback Rate: Excellent - 4, Good - 3, Moderate - 2, Poor - 1

Suggestions for further Improvement


Faculty Sign



EXCEL ENGINEERING COLLEGE

(Autonomous)

Approved by AICTE, New Delhi & Affiliated to Anna University, Chennai
Accredited by NBA (AERO, CSE, ECE, MECH), NAAC with "A" and Recognised by UGC (2f & 12B)

KOMARAPALAYAM – 637303

Department of MCA

Academic Year 2022-23

SYLLABUS REVIEW FEEDBACK FORM: FACULTY

Name of the Faculty : D.V Rajkumar
Designation : Assistant Professor.

Date: 04-11-2022

S.No	Descriptions	Rating
1	Is the course objectives are illustrated clearly to the need of the students?	3
2	Are you satisfying the existing syllabus which you are handling?	4
3	Is the syllabus designed based on average student's level?	3
4	Is the syllabus provided the basic knowledge to carry out the field project/internship	4
5	Is the prerequisite for the syllabus available in the curriculum?	4
6	Is the syllabus well organized and easy to follow by the students?	3
7	Is the syllabus covered fundamentals, advanced topics and ensures balance between theory & applications	3
8	Is the text and Reference book prescribed in the syllabus is standard or not?	4

Feedback Rate: Excellent - 4, Good - 3, Moderate - 2, Poor - 1

Suggestions for further Improvement


Faculty Sign



EXCEL ENGINEERING COLLEGE

(Autonomous)

Approved by AICTE, New Delhi & Affiliated to Anna University, Chennai
Accredited by NBA (AERO, CSE, ECE, MECH), NAAC with "A+" and Recognised by UGC (2f & 12B)

KOMARAPALAYAM – 637303

Department of MCA

Academic Year 2022-23

SYLLABUS REVIEW FEEDBACK FORM: FACULTY

Name of the Faculty : M.K. NAGESWARAN
Designation : Assistant professor

Date: 4/1/2023

S.No	Descriptions	Rating
1	Is the course objectives are illustrated clearly to the need of the students?	4
2	Are you satisfying the existing syllabus which you are handling?	3
3	Is the syllabus designed based on average student's level?	4
4	Is the syllabus provided the basic knowledge to carry out the field project/internship	3
5	Is the prerequisite for the syllabus available in the curriculum?	4
6	Is the syllabus well organized and easy to follow by the students?	4
7	Is the syllabus covered fundamentals, advanced topics and ensures balance between theory & applications	3
8	Is the text and Reference book prescribed in the syllabus is standard or not?	4

Feedback Rate: Excellent - 4, Good - 3, Moderate - 2, Poor - 1

Suggestions for further Improvement


Faculty Sign