



EXCEL ENGINEERING COLLEGE

(Autonomous)

Approved by AICTE, New Delhi & Affiliated to Anna University, Chennai

Accredited by NBA (AERO, CSE, ECE, MECH), NAAC with "A+" and Recognised by UGC (2f & 12B)

KOMARAPALAYAM-637 303

DEPARTMENT OF ELECTRICAL AND ELECTRONICS ENGINEERING

Academic Year 2022-23

CONSOLIDATED SYLLABUS REVIEW FEEDBACK FORM : STUDENTS

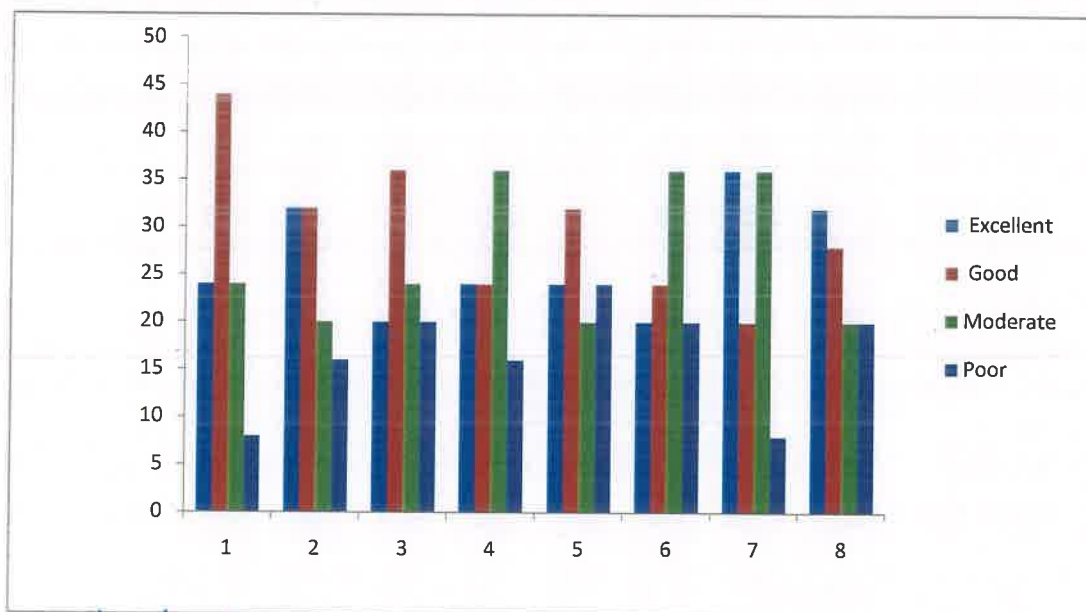
EEC /DEPT / 2022-23

Year /Sem : II/III

No of Responses : 25

No of Subjects : 9

S.No	Descriptions	Feedback in Percentage			
		Excellent	Good	Moderate	Poor
1	What is the Depth of the syllabus content ?	24	44	24	8
2	Whether Syllabus is carrier oriented?	32	32	20	16
3	Whether the course was well Structured to achieve course outcomes?	20	36	24	20
4	Rate the size of the syllabus in terms of students load	24	24	36	16
5	Whether Course objective is clear ?	24	32	20	24
6	Are the books prescribed as a text book/ Reference book in related to syllabus	20	24	36	20
7	Whether syllabus is relevant to real word problems?	36	20	36	8
8	Whether the syllabus is covered with industry standards?	32	28	20	20



ACADEMIC CO-ORDINATOR

HOD



Head of the Department
Dept. of Electrical and Electronics Engineering
Excel Engineering College (Autonomous)
NH-544, Pallakkapalayam,
Komarapalayam-637303 Namakkal (Dt.), Tamilnadu.



EXCEL ENGINEERING COLLEGE

(Autonomous)

Approved by AICTE, New Delhi & Affiliated to Anna University, Chennai

Accredited by NBA (AERO, CSE, ECE, MECH), NAAC with "A+" and Recognised by UGC (2f & 12B)

KOMARAPALAYAM-637 303

DEPARTMENT OF ELECTRICAL AND ELECTRONICS ENGINEERING

Academic Year 2022-23

CONSOLIDATED SYLLABUS REVIEW FEEDBACK FORM : STUDENTS

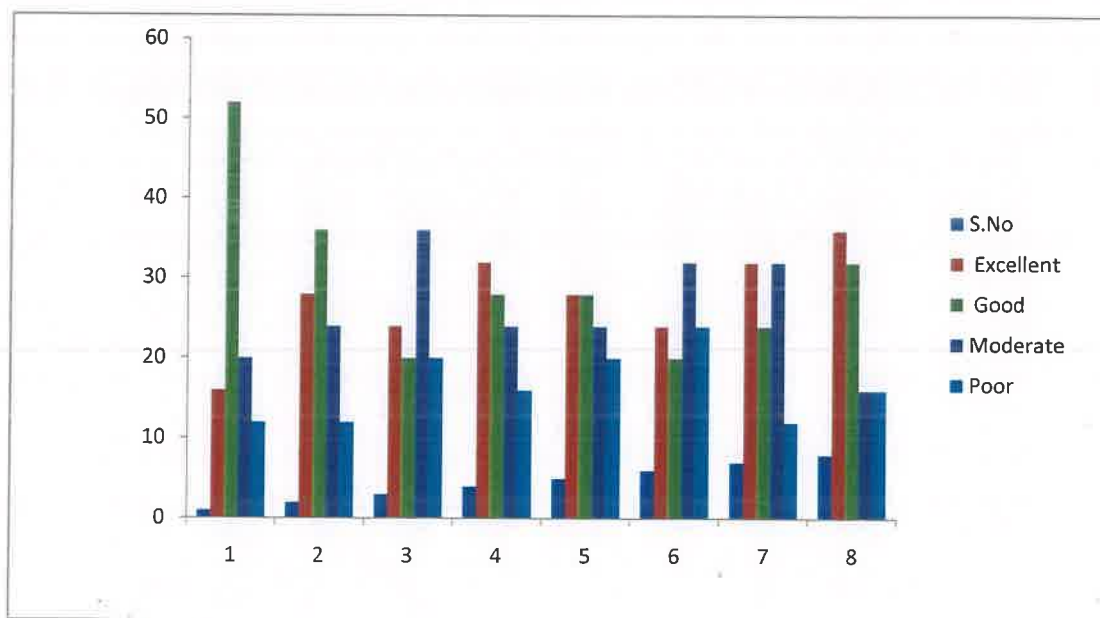
EEC /DEPT / 2022-23

Year /Sem : II/IV

No of Responses : 25

No of Subjects : 9

S.No	Descriptions	Feedback in Percentage			
		Excellent	Good	Moderate	Poor
1	What is the Depth of the syllabus content ?	16	52	20	12
2	Whether Syllabus is carrier oriented?	28	36	24	12
3	Whether the course was well Structured to achieve course outcomes?	24	20	36	20
4	Rate the size of the syllabus in terms of students load	32	28	24	16
5	Whether Course objective is clear ?	28	28	24	20
6	Are the books prescribed as a text book/ Refrence book in related to syllabus	24	20	32	24
7	Whether syllabus is relavant to real word problems?	32	24	32	12
8	Whether the syllabus is covered with industry standards?	36	32	16	16



[Signature]
ACADEMIC CO-ORDINATOR



[Signature]
HOD
Head of the Department
Dept. of Electrical and Electronics Engineering
Excel Engineering College (Autonomous)
NH-544, Pallakkapalayam,
Komarapalayam-637303 Namakkal (Dt.), Tamilnadu.



EXCEL ENGINEERING COLLEGE

(Autonomous)

Approved by AICTE, New Delhi & Affiliated to Anna University, Chennai

Accredited by NBA (AERO, CSE, ECE, MECH), NAAC with "A+" and Recognised by UGC (2f & 12B)

KOMARAPALAYAM-637 303

DEPARTMENT OF ELECTRICAL AND ELECTRONICS ENGINEERING

M.E - Power Electronics and Drives

Academic Year 2022-23

CONSOLIDATED SYLLABUS REVIEW FEEDBACK FORM : STUDENTS

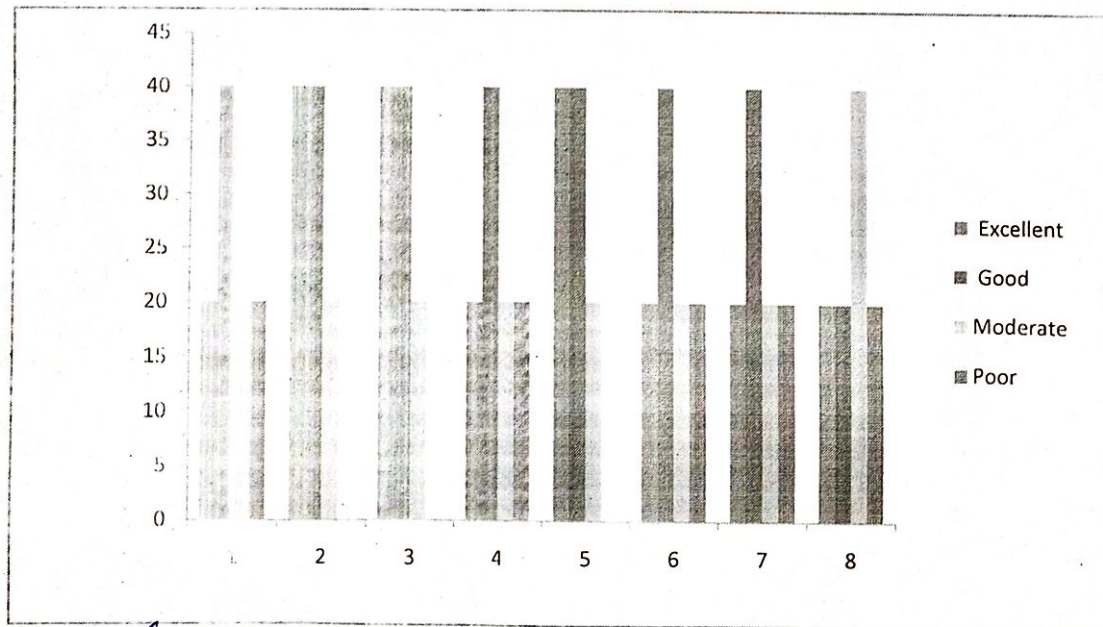
EEC /DEPT / 2022-23

Year /Sem : I/I

No of Responses : 5

No of Subjects : 6

S.No	Descriptions	Feedback in Percentage			
		Excellent	Good	Moderate	Poor
1	What is the Depth of the syllabus content ?	20	40	20	20
2	Whether Syllabus is carrier oriented?	40	40	20	0
3	Whether the course was well Structured to achieve course outcomes?	40	40	20	0
4	Rate the size of the syllabus in terms of students load	20	40	20	20
5	Whether Course objective is clear ?	40	40	20	0
6	Are the books prescribed as a text book/ Reference book in related to syllabus	20	40	20	20
7	Whether syllabus is relevant to real word problems?	20	40	20	20
8	Whether the syllabus is covered with industry standards?	20	20	40	20



Faculty Incharge

HOD



EXCEL ENGINEERING COLLEGE

(Autonomous)

Approved by AICTE, New Delhi & Affiliated to Anna University, Chennai

Accredited by NEA (AERO, CSE, ECE, MECH), NAAC with "A+" and Recognised by UGC (2f & 12B)

KOMARAPALAYAM-637 303

DEPARTMENT OF ELECTRICAL AND ELECTRONICS ENGINEERING

M.E - Power Electronics and Drives

Academic Year 2022-23

CONSOLIDATED SYLLABUS REVIEW FEEDBACK FORM : STUDENTS

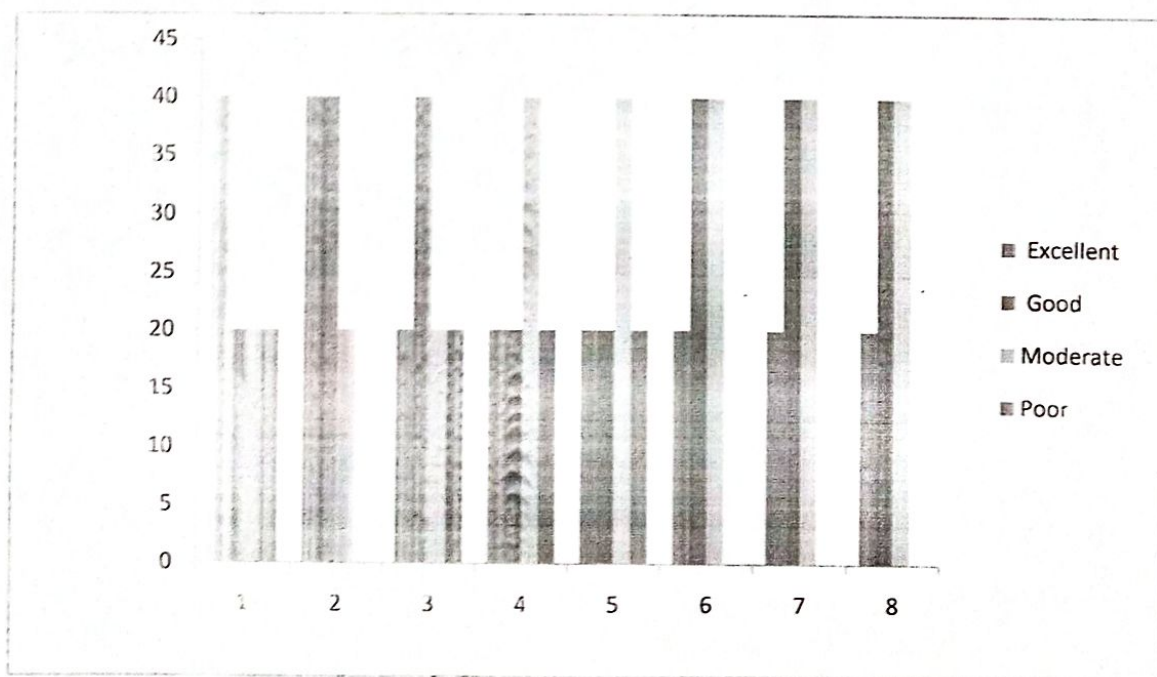
EEC /DEPT / 2022-23

Year /Sem : I/II

No of Responses : 5

No of Subjects : 6

S.No	Descriptions	Feedback in Percentage			
		Excellent	Good	Moderate	Poor
1	What is the Depth of the syllabus content ?	40	20	20	20
2	Whether Syllabus is carrier oriented?	40	40	20	0
3	Whether the course was well Structured to achieve course outcomes?	20	40	20	20
4	Rate the size of the syllabus in terms of students load	20	20	40	20
5	Whether Course objective is clear ?	20	20	40	20
6	Are the books prescribed as a text book/ Reference book in related to syllabus	20	40	40	0
7	Whether syllabus is relevant to real word problems?	20	40	40	0
8	Whether the syllabus is covered with industry standards?	20	40	40	0



Faculty Incharge



HOD



EXCEL ENGINEERING COLLEGE

(Autonomous)

Approved by AICTE, New Delhi & Affiliated to Anna University, Chennai

Accredited by NBA (AERO, CSE, ECE, MECH), NAAC with "A+" and Recognised by UGC (2f & 12B)

KOMARAPALAYAM-637 303

DEPARTMENT OF ELECTRICAL AND ELECTRONICS ENGINEERING

M.E - Power Electronics and Drives

Academic Year 2022-23

CONSOLIDATED SYLLABUS REVIEW FEEDBACK FORM : STUDENTS

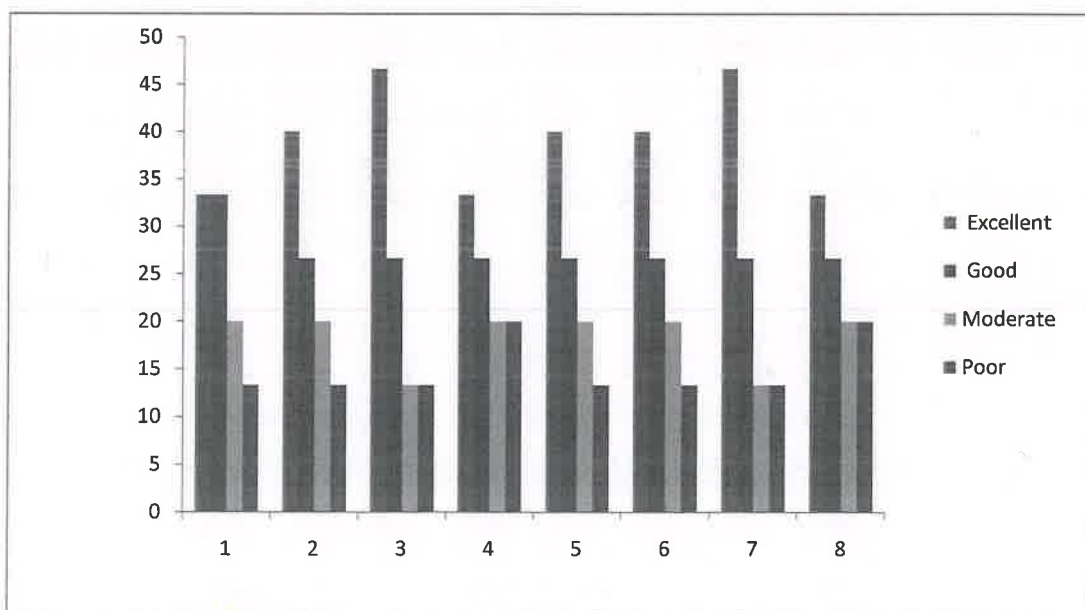
EEC /DEPT / 2022-23

Year /Sem : II/III

No of Responses : 15

No of Subjects : 4

S.No	Descriptions	Feedback in Percentage			
		Excellent	Good	Moderate	Poor
1	What is the Depth of the syllabus content ?	33	33	20	13
2	Whether Syllabus is carrier oriented?	40	27	20	13
3	Whether the course was well Structured to achieve course outcomes?	47	27	13	13
4	Rate the size of the syllabus in terms of students load	33	27	20	20
5	Whether Course objective is clear ?	40	27	20	13
6	Are the books prescribed as a text book/ Reference book in related to syllabus	40	27	20	13
7	Whether syllabus is relevant to real word problems?	47	27	13	13
8	Whether the syllabus is covered with industry standards?	33	27	20	20



ACADEMIC CO-ORDINATOR



HOD

Head of the Department
Dept. of Electrical and Electronics Engineering
Excel Engineering College (Autonomous)
NH-544, Pallakapalayam,
Komarapalayam-637303 Nariakkal (Dt.), Tamilnadu.



EXCEL ENGINEERING COLLEGE

(Autonomous)

Approved by AICTE, New Delhi & Affiliated to Anna University, Chennai

Accredited by NBA (AERO, CSE, ECE, MECH), NAAC with "A+" and Recognised by UGC (2f & 12B)

KOMARAPALAYAM-637 303

DEPARTMENT OF ELECTRICAL AND ELECTRONICS ENGINEERING

M.E - Embedded System Technologies

Academic Year 2022-23

CONSOLIDATED SYLLABUS REVIEW FEEDBACK FORM : STUDENTS

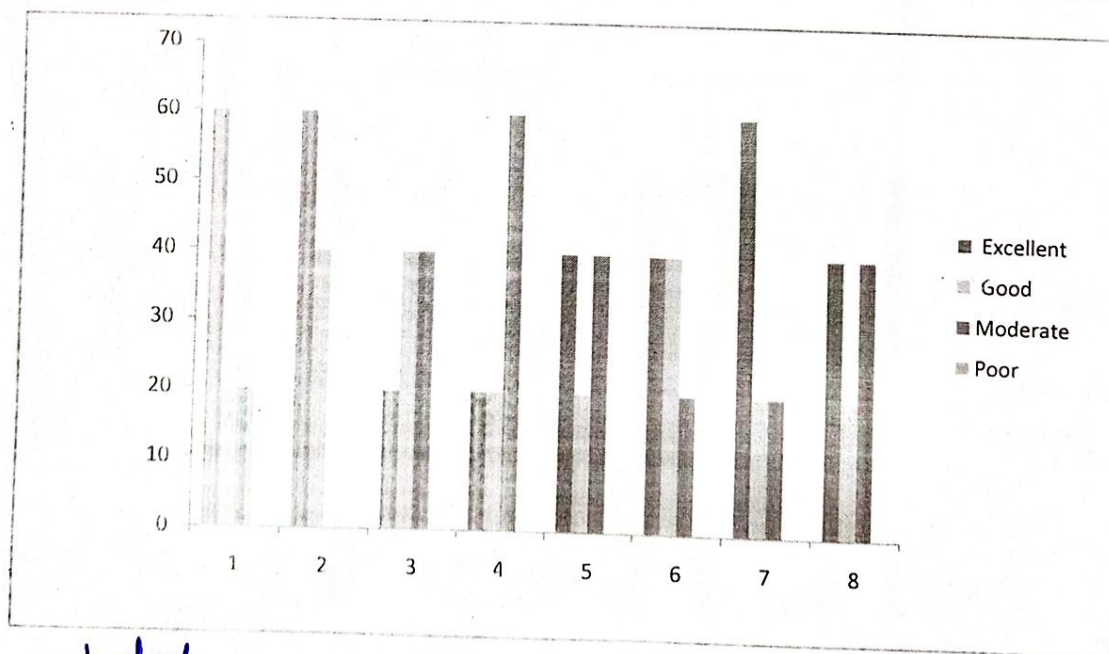
EEC /DEPT / 2022-23

Year /Sem : I/I

No of Responses : 5

No of Subjects : 6

S.No	Descriptions	Feedback in Percentage			
		Excellent	Good	Moderate	Poor
1	What is the Depth of the syllabus content ?	60	20	20	0
2	Whether Syllabus is carrier oriented?	60	40	0	0
3	Whether the course was well Structured to achieve course outcomes?	20	40	40	0
4	Rate the size of the syllabus in terms of students load	20	20	60	0
5	Whether Course objective is clear ?	40	20	40	0
6	Are the books prescribed as a text book/ Reference book in related to syllabus	40	40	20	0
7	Whether syllabus is relevant to real word problems?	60	20	20	0
8	Whether the syllabus is covered with industry standards?	40	20	40	0



[Signature]
Faculty Incharge

[Signature]
HOD 21/12/23





EXCEL ENGINEERING COLLEGE

(Autonomous)

Approved by AICTE, New Delhi & Affiliated to Anna University, Chennai

Accredited by NBA (AERO, CSE, ECE, MECH), NAAC with "A+" and Recognised by UGC (2f & 12B)

KOMARAPALAYAM-637 303

DEPARTMENT OF ELECTRICAL AND ELECTRONICS ENGINEERING

M.E - Embedded System Technologies

Academic Year 2022-23

CONSOLIDATED SYLLABUS REVIEW FEEDBACK FORM : STUDENTS

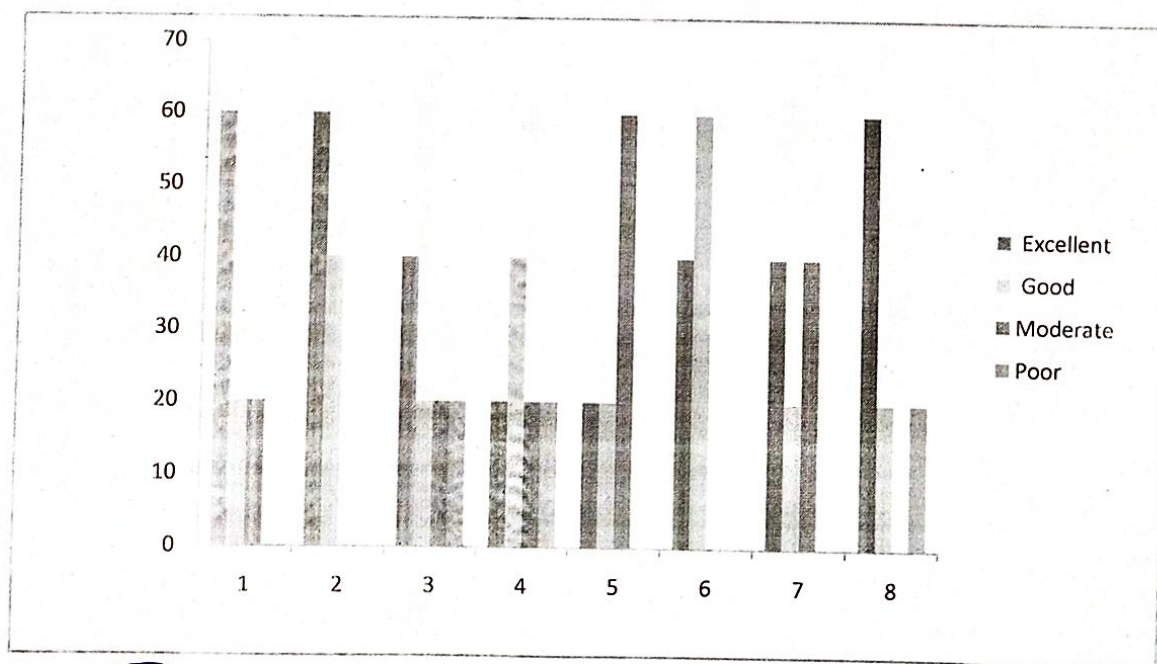
EEC /DEPT / 2022-23

Year /Sem : I/II

No of Responses : 5

No of Subjects : 6

S.No	Descriptions	Feedback in Percentage			
		Excellent	Good	Moderate	Poor
1	What is the Depth of the syllabus content ?	60	20	20	0
2	Whether Syllabus is carrier oriented?	60	40	0	0
3	Whether the course was well Structured to achieve course outcomes?	40	20	20	20
4	Rate the size of the syllabus in terms of students load	20	40	20	20
5	Whether Course objective is clear ?	20	20	60	0
6	Are the books prescribed as a text book/ Reference book in related to syllabus	40	60	0	0
7	Whether syllabus is relevant to real word problems?	40	20	40	0
8	Whether the syllabus is covered with industry standards?	60	20	0	20



S.B. [Signature]
Faculty Incharge



[Signature]
HOD 21/11/23



EXCEL ENGINEERING COLLEGE

(Autonomous)

Approved by AICTE, New Delhi & Affiliated to Anna University, Chennai

Accredited by NBA (AERO, CSE, ECE, MECH), NAAC with "A+" and Recognised by UGC (2f & 12B)

KOMARAPALAYAM-637 303

DEPARTMENT OF ELECTRICAL AND ELECTRONICS ENGINEERING

M.E - Embedded System Technologies

Academic Year 2022-23

CONSOLIDATED SYLLABUS REVIEW FEEDBACK FORM : STUDENTS

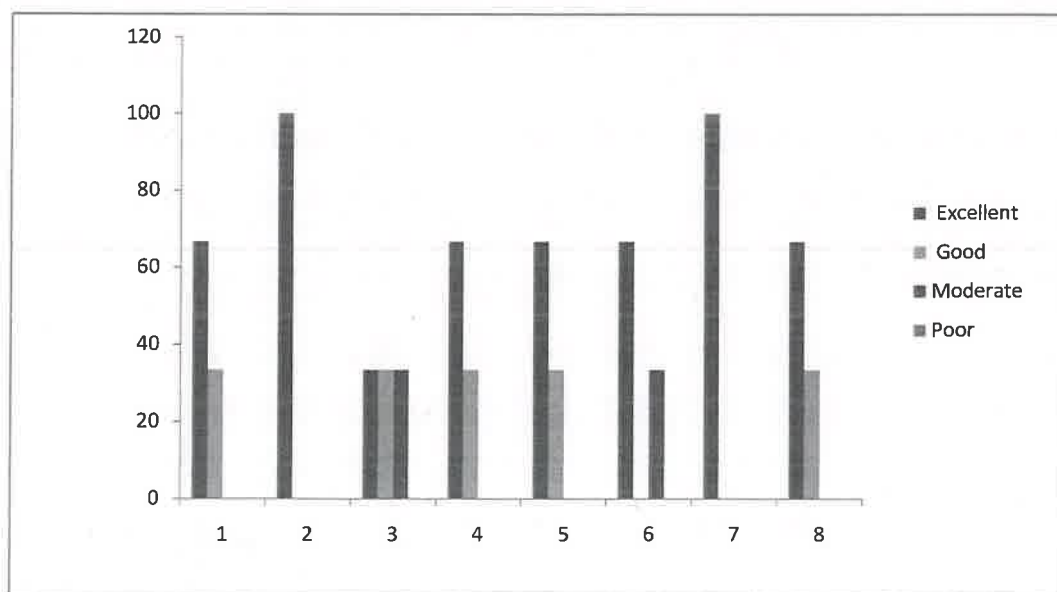
EEC /DEPT / 2022-23

Year /Sem : II/III

No of Responses : 3

No of Subjects : 4

S.No	Descriptions	Feedback in Percentage			
		Excellent	Good	Moderate	Poor
1	What is the Depth of the syllabus content ?	67	33	0	0
2	Whether Syllabus is carrier oriented?	100	0	0	0
3	Whether the course was well Structured to achieve course outcomes?	33	33	33	0
4	Rate the size of the syllabus in terms of students load	67	33	0	0
5	Whether Course objective is clear ?	67	33	0	0
6	Are the books prescribed as a text book/ Reference book in related to syllabus	67	0	33	0
7	Whether syllabus is relevant to real word problems?	100	0	0	0
8	Whether the syllabus is covered with industry standards?	67	33	0	0



ACADEMIC CO-ORDINATOR

HOD

Head of the Department
Dept. of Electrical and Electronics Engineering
Excel Engineering College (Autonomous)
NH-544, Pallakapalayam,
Komarapalayam-637303 Namakkal (Dt.), Tamilnadu





EXCEL ENGINEERING COLLEGE (Autonomous)

Approved by AICTE, New Delhi & Affiliated to Anna University, Chennai
Accredited by NBA (AERO, CSE, ECE, MECH), NAAC with "A+" and Recognised by UGC (2f & 12B)
KOMARAPALAYAM – 637303

Department of Electrical and Electronics Engineering

Academic Year 2022-23

SYLLABUS REVIEW FEEDBACK FORM: STUDENT

Class / Sem / Year / Section: II year / III Sem

Date: 4/2/2023

S.No	Descriptions	Rating
1	What is the Depth of the syllabus content?	4
2	Whether Syllabus is carrier oriented?	3
3	Whether the course was well Structured to achieve course outcomes?	4
4	Rate the size of the syllabus in terms of students load	2
5	Whether Course objective is clear?	3
6	Are the books prescribed as a text book/ Reference book in related to syllabus?	4
7	Whether syllabus is relevant to real word problems?	3
8	Whether the syllabus is covered with industry standards?	3

Feedback Rate: Excellent - 4, Good - 3, Moderate - 2, Poor - 1

Suggestions for further Improvement

T. H. H.
Student Sign



EXCEL ENGINEERING COLLEGE

(Autonomous)

Approved by AICTE, New Delhi & Affiliated to Anna University, Chennai
Accredited by NBA (AERO, CSE, ECE, MECH), NAAC with "A+" and Recognised by UGC (2f & 12B)

KOMARAPALAYAM - 637303

Department of ~~EEET~~ Electrical and Electronics Engineering

Academic Year 2022 - 2023

SYLLABUS REVIEW FEEDBACK FORM: STUDENT

Class / Sem / Year / Section: II / 31

Date: 09.12.2022

S.No	Descriptions	Rating
1	What is the Depth of the syllabus content?	3
2	Whether Syllabus is carrier oriented?	4
3	Whether the course was well Structured to achieve course outcomes?	3
4	Rate the size of the syllabus in terms of students load	3
5	Whether Course objective is clear?	4
6	Are the books prescribed as a text book/ Reference book in related to syllabus?	4
7	Whether syllabus is relevant to real word problems?	3
8	Whether the syllabus is covered with industry standards?	4

Feedback Rate: Excellent - 4, Good - 3, Moderate - 2, Poor - 1

Suggestions for further Improvement

M. N. Sathish

Student Sign



EXCEL ENGINEERING COLLEGE

(Autonomous)

Approved by AICTE, New Delhi & Affiliated to Anna University, Chennai
Accredited by NBA (AERO, CSE, ECE, MECH), NAAC with "A+" and Recognised by UGC (2f & 12B)

KOMARAPALAYAM – 637303

Department of Electrical and Electronics Engineering [M-E- PED]

Academic Year 2022 - 2023

SYLLABUS REVIEW FEEDBACK FORM: STUDENT

Class / Sem / Year / Section: 1st Year / 1 Sem

Date: 30.1.2023

S.No	Descriptions	Rating
1	What is the Depth of the syllabus content?	4
2	Whether Syllabus is carrier oriented?	4
3	Whether the course was well Structured to achieve course outcomes?	3
4	Rate the size of the syllabus in terms of students load	4
5	Whether Course objective is clear?	4
6	Are the books prescribed as a text book/ Reference book in related to syllabus?	2
7	Whether syllabus is relevant to real word problems?	4
8	Whether the syllabus is covered with industry standards?	3

Feedback Rate: Excellent - 4, Good - 3, Moderate - 2, Poor - 1

Suggestions for further Improvement

Student Sign



EXCEL ENGINEERING COLLEGE
(Autonomous)

Approved by AICTE, New Delhi & Affiliated to Anna University, Chennai
Accredited by NBA (AERO, CSE, ECE, MECH), NAAC with "A" and Recognised by UGC (2f & 12B)

KOMARAPALAYAM – 637303

Department of Electrical and Electronics Engineering
Academic Year 2022-2023 [M/E - EST]

SYLLABUS REVIEW FEEDBACK FORM: STUDENT

Class / Sem / Year / Section: I / II

Date: 06.03.2023

S.No	Descriptions	Rating
1	What is the Depth of the syllabus content?	3
2	Whether Syllabus is carrier oriented?	4
3	Whether the course was well Structured to achieve course outcomes?	2
4	Rate the size of the syllabus in terms of students load	3
5	Whether Course objective is clear?	4
6	Are the books prescribed as a text book/ Reference book in related to syllabus?	4
7	Whether syllabus is relevant to real word problems?	2
8	Whether the syllabus is covered with industry standards?	3

Feedback Rate: Excellent - 4, Good - 3, Moderate - 2, Poor - 1

Suggestions for further Improvement

E. K. K.
Student Sign



EXCEL ENGINEERING COLLEGE

(Autonomous)

Approved by AICTE, New Delhi & Affiliated to Anna University, Chennai
Accredited by NBA (AERO, CSE, ECE, MECH), NAAC with "A+" and Recognised by UGC (2f & 12B)

KOMARAPALAYAM-637 303

DEPARTMENT OF ELECTRICAL AND ELECTRONICS ENGINEERING

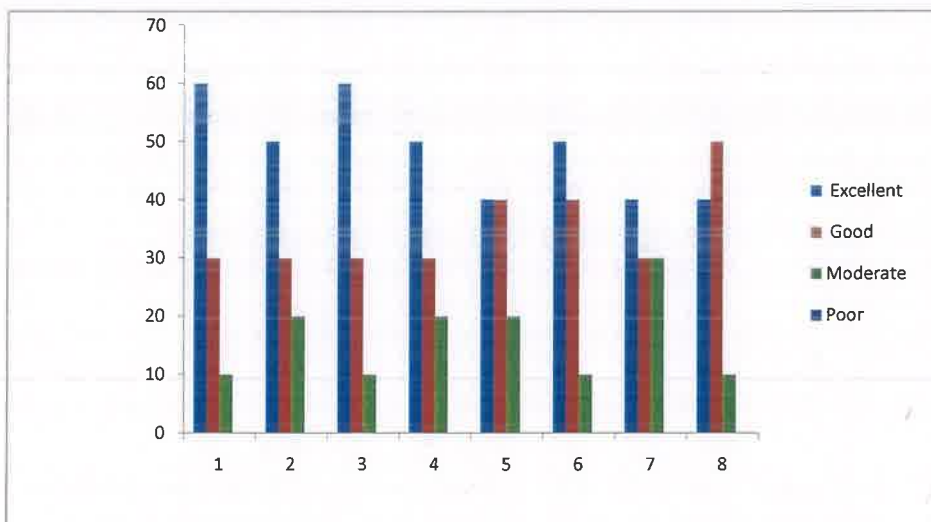
Academic Year 2022-23

CONSOLIDATED SYLLABUS REVIEW FEEDBACK FORM : FACULTY

EEC / EEE/ 2022-23

Year /Sem : II/III

No of Faculty Responses : 10		Feedback in Percentage			
S.No	Descriptions	Excellent	Good	Moderate	Poor
1	Is the course objectives are illustrated clearly to the need of the students?	60	30	10	0
2	Are you satisfy the existing syllabus which you are handling?	50	30	20	0
3	Is the syllabus designed based on average students level?	60	30	10	0
4	Is the syllabus provided the basic knowledge to carry out the field project/internship.	50	30	20	0
5	Is the prerequest for the syllabus available in the curriculam?	40	40	20	0
6	Is the syllabus well organized and easy to follow by the students?	50	40	10	0
7	Is the syllabus covered fundametals,advanced topics and ensures balance between theory & applications.	40	30	30	0
8	Is the text and Reference books prescribed in the syllabus is standard or not?	40	50	10	0



[Signature]
ACADEMIC CO-ORDINATOR



[Signature]
HOD
Head of the Department
Dept. of Electrical and Electronics Engineering
Excel Engineering College (Autonomous)
NH-544, Pallakapalayam,
Komarapalayam-637303 Namakkal (Dt.), Tamilnadu.



EXCEL ENGINEERING COLLEGE

(Autonomous)

Approved by AICTE, New Delhi & Affiliated to Anna University, Chennai
Accredited by NBA (AERO, CSE, ECE, MECH), NAAC with "A+" and Recognised by UGC (2f & 12B)

KOMARAPALAYAM-637 303

DEPARTMENT OF ELECTRICAL AND ELECTRONICS ENGINEERING

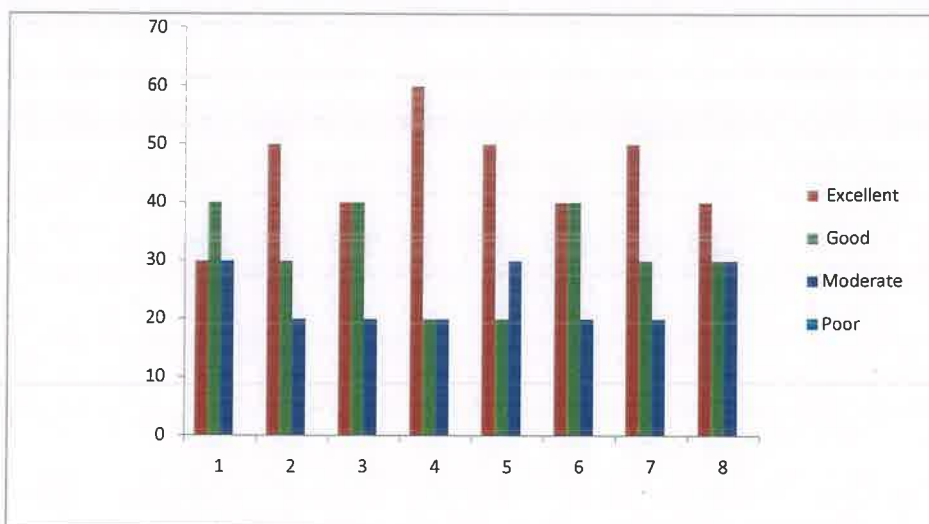
Academic Year 2022-23

CONSOLIDATED SYLLABUS REVIEW FEEDBACK FORM : FACULTY

EEC / EEE/ 2022-23

Year /Sem : II/IV

No of Faculty Responses : 9		Feedback in Percentage			
S.No	Descriptions	Excellent	Good	Moderate	Poor
1	Is the course objectives are illustrated clearly to the need of the students?	30	40	30	0
2	Are you satisfy the existing syllabus which you are handling?	50	30	20	0
3	Is the syllabus designed based on average students level?	40	40	20	0
4	Is the syllabus provided the basic knowledge to carry out the field project/internship.	60	20	20	0
5	Is the prerequest for the syllabus available in the curriculum?	50	20	30	0
6	Is the syllabus well organized and easy to follow by the students?	40	40	20	0
7	Is the syllabus covered fundametals,advanced topics and ensures balance between theory & applications.	50	30	20	0
8	Is the text and Reference books prescribed in the syllabus is standard or not?	40	30	30	0




ACADEMIC CORDINATOR

HOD

Head of the Department
Dept. of Electrical and Electronics Engineering
Excel Engineering College (Autonomous),
NH-544, Pallakapalayam,
Komarapalayam-637303, Namakkal (Dt.), Tamilnadu





EXCEL ENGINEERING COLLEGE

(Autonomous)

Approved by AICTE, New Delhi & Affiliated to Anna University, Chennai
Accredited by NBA (AERO, CSE, ECE, MECH), NAAC with "A+" and Recognised by UGC (2f & 12B)

KOMARAPALAYAM-637 303

DEPARTMENT OF ELECTRICAL AND ELECTRONICS ENGINEERING (M.E- EST)

Academic Year 2022-23

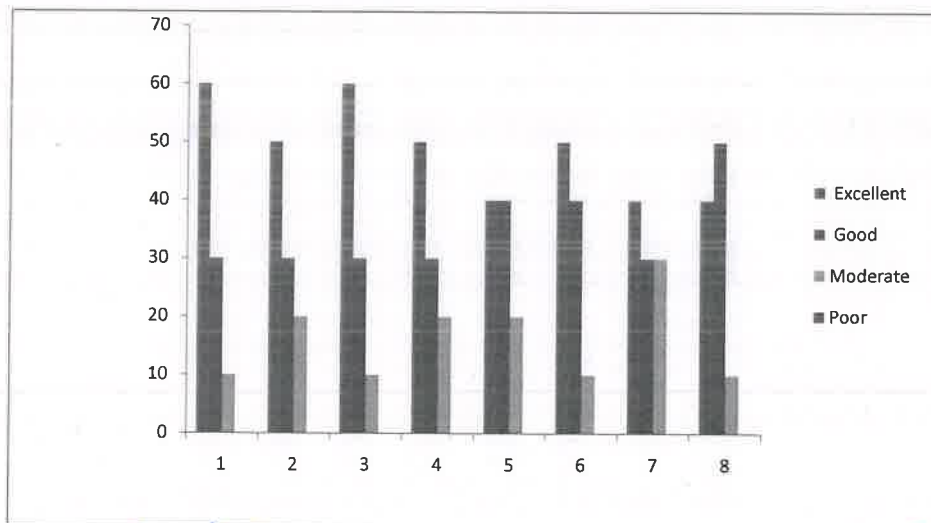
CONSOLIDATED SYLLABUS REVIEW FEEDBACK FORM : FACULTY

EEC / EEE/ 2022-23

Year /Sem : II/III

No of Faculty Responses : 4

S.No	Descriptions	Feedback in Percentage			
		Excellent	Good	Moderate	Poor
1	Is the course objectives are illustrated clearly to the need of the students?	60	30	10	0
2	Are you satisfy the existing syllabus which you are handling?	50	30	20	0
3	Is the syllabus designed based on average students level?	60	30	10	0
4	Is the syllabus provided the basic knowledge to carry out the field project/internship.	50	30	20	0
5	Is the prerequest for the syllabus avilable in the curriculam?	40	40	20	0
6	Is the syllabus well organized and easy to follow by the students?	50	40	10	0
7	Is the syllabus covered fundametals,advanced topics and ensures balance between theory & applications.	40	30	30	0
8	Is the text and Reference books prescribed in the syllabus is standard or not?	40	50	10	0



[Signature]

ACADEMIC CO-ORDINATOR

[Signature]
HOD

Head of the Department
Dept. of Electrical and Electronics Engineering
Excel Engineering College (Autonomous)
NH-544, Pallakkapalayam,
Komarapalayam-637303 Namakkal (Dt.), Tamilnadu.





EXCEL ENGINEERING COLLEGE

(Autonomous)

Approved by AICTE New Delhi & Affiliated to Anna University, Chennai
Accredited by NBA (AERO, CSE, ECE, MECH) NAAC with "A+" and Recognised by UGC (2f & 12B)

KOMARAPALAYAM - 637303

Department of Electrical and Electronics Engineering

Academic Year 2022 - 2023

SYLLABUS REVIEW FEEDBACK FORM: Academician

Name of the Faculty : B. Bommirani

Date: 17-11-2022

Designation : AP/EEE

Name of the Institute : Sengunthar Engineering College
(Autonomous) - Tiruchengode

S.No	Descriptions	Rating
1	Is the course capable of adding learning values, professional ethics and human values in students?	4
2	Is our syllabus compatible with the real world problems?	3
3	What are the efforts required by the students to learn the syllabus?	4
4	Rate the depth of knowledge about the courses.	4
5	Is the syllabus able to meet the industrial standards?	4
6	Is the syllabus able to build the students readily employable without training?	3
7	Is the syllabus sufficient to analyses engineering problem and solutions?	3
8	Are the courses providing good balance between theory and application?	4
9	Is the syllabus helps the students to work in a team and also lead the team.	3
10	Is the syllabus able to meet the industry expectations	3

Feedback Rate: Excellent - 4, Good - 3, Moderate - 2, Poor - 1

Suggestions for further Improvement

Include the recent technology to meet the industrial Application

B. Bommirani
Sign



EXCEL ENGINEERING COLLEGE

(Autonomous)

Approved by AICTE, New Delhi & Affiliated to Anna University, Chennai
Accredited by NBA (AERO, CSE, ECE, MECH), NAAC with "A" and Recognised by UGC (2f & 12B)
KOMARAPALAYAM - 637303

Department of Electrical and Electronic Engineering

Academic Year 2022 - 2023

SYLLABUS REVIEW FEEDBACK FORM: Academician

Name of the Faculty : P. MANIKANDAN

Date: 28.12.2022

Designation : AP / EEE.

Name of the Institute : K.S.R. Institute of Technology (Autonomous)

S.No	Descriptions	Rating
1	Is the course capable of adding learning values, professional ethics and human values in students?	3
2	Is our syllabus compatible with the real world problems?	4
3	What are the efforts required by the students to learn the syllabus?	4
4	Rate the depth of knowledge about the courses.	3
5	Is the syllabus able to meet the industrial standards?	3
6	Is the syllabus able to build the students readily employable without training?	4
7	Is the syllabus sufficient to analyses engineering problem and solutions?	4
8	Are the courses providing good balance between theory and application?	2
9	Is the syllabus helps the students to work in a team and also lead the team.	3
10	Is the syllabus able to meet the industry expectations	4

Feedback Rate: Excellent - 4, Good - 3, Moderate - 2, Poor - 1

Suggestions for further Improvement


Sign



EXCEL ENGINEERING COLLEGE

(Autonomous)

Approved by AICTE, New Delhi & Affiliated to Anna University, Chennai
Accredited by NBA (AERO, CSE, ECE, MECH), NAAC with "A" and Recognised by UGC (2f & 12B)

KOMARAPALAYAM - 637303

Department of Electrical And Electronics Engineering

Academic Year 2022-2023

SYLLABUS REVIEW FEEDBACK FORM: Academician

Name of the Faculty : Dr. RAMESH

Date: 03.01.2023

Designation : ASP /EEE

Name of the Institute : AL AHEEN ENGINEERING COLLEGE (AUTONOMOUS)

S.No	Descriptions	Rating
1	Is the course capable of adding learning values, professional ethics and human values in students?	4
2	Is our syllabus compatible with the real world problems?	3
3	What are the efforts required by the students to learn the syllabus?	2
4	Rate the depth of knowledge about the courses.	4
5	Is the syllabus able to meet the industrial standards?	4
6	Is the syllabus able to build the students readily employable without training?	3
7	Is the syllabus sufficient to analyses engineering problem and solutions?	3
8	Are the courses providing good balance between theory and application?	4
9	Is the syllabus helps the students to work in a team and also lead the team.	4
10	Is the syllabus able to meet the industry expectations	3

Feedback Rate: Excellent - 4, Good - 3, Moderate - 2, Poor - 1

Suggestions for further Improvement


Sign



EXCEL ENGINEERING COLLEGE
(Autonomous)

Approved by AICTE, New Delhi & Affiliated to Anna University, Chennai
Accredited by NBA (AERO, CSE, ECE, MECH), NAAC with "A+" and Recognised by UGC (2f & 12B)

KOMARAPALAYAM - 637303

Department of Electrical and Electronics Engineering

Academic Year 2022 - 2023

SYLLABUS REVIEW FEEDBACK FORM: Academician

Name of the Faculty : Dr. T. Jayakumar

Date: 10-02-2023

Designation : ASP/EEE

Name of the Institute : Nandha Engineering College (Autonomous)

S.No	Descriptions	Rating
1	Is the course capable of adding learning values, professional ethics and human values in students?	3
2	Is our syllabus compatible with the real world problems?	4
3	What are the efforts required by the students to learn the syllabus?	3
4	Rate the depth of knowledge about the courses.	3
5	Is the syllabus able to meet the industrial standards?	4
6	Is the syllabus able to build the students readily employable without training?	4
7	Is the syllabus sufficient to analyses engineering problem and solutions?	4
8	Are the courses providing good balance between theory and application?	3
9	Is the syllabus helps the students to work in a team and also lead the team.	2
10	Is the syllabus able to meet the industry expectations	4

Feedback Rate: Excellent - 4, Good - 3, Moderate - 2, Poor - 1

Suggestions for further Improvement


Sign



EXCEL ENGINEERING COLLEGE

(Autonomous)

Approved by AICTE, New Delhi & Affiliated to Anna University, Chennai
Accredited by NBA (AERO, CSE, ECE, MECH), NAAC with "A" and Recognised by UGC (2f & 12B)

KOMARAPALAYAM - 637303

Department of Electrical and Electronics Engineering

Academic Year 2022-2023

SYLLABUS REVIEW FEEDBACK FORM: FACULTY

Name of the Faculty : MS. B.S. NANTHINI

Date: 09/09/2022

Designation : AP/EEE

S.No	Descriptions	Rating
1	Is the course objectives are illustrated clearly to the need of the students?	4
2	Are you satisfying the existing syllabus which you are handling?	3
3	Is the syllabus designed based on average student's level?	4
4	Is the syllabus provided the basic knowledge to carry out the field project/internship	4
5	Is the prerequisite for the syllabus available in the curriculum?	3
6	Is the syllabus well organized and easy to follow by the students?	2
7	Is the syllabus covered fundamentals, advanced topics and ensures balance between theory & applications	4
8	Is the text and Reference book prescribed in the syllabus is standard or not?	4

Feedback Rate: Excellent - 4, Good - 3, Moderate - 2, Poor - 1

Suggestions for further Improvement

MS. B.S. NANTHINI
Faculty Sign



EXCEL ENGINEERING COLLEGE

(Autonomous)

Approved by AICTE, New Delhi & Affiliated to Anna University, Chennai
Accredited by NBA (AERO, CSE, ECE, MECH), NAAC with "A+" and Recognised by UGC (2f & 12B)

KOMARAPALAYAM - 637303

Department of Electrical & Electronics Engineering

Academic Year 2022 - 2023

SYLLABUS REVIEW FEEDBACK FORM: FACULTY

Name of the Faculty : C. RAJESWARI

Date: 16.09.2022

Designation

: ASSISTANT PROFESSOR

S.No	Descriptions	Rating
1	Is the course objectives are illustrated clearly to the need of the students?	4
2	Are you satisfying the existing syllabus which you are handling?	4
3	Is the syllabus designed based on average student's level?	3
4	Is the syllabus provided the basic knowledge to carry out the field project/internship	4
5	Is the prerequisite for the syllabus available in the curriculum?	3
6	Is the syllabus well organized and easy to follow by the students?	3
7	Is the syllabus covered fundamentals, advanced topics and ensures balance between theory & applications	4
8	Is the text and Reference book prescribed in the syllabus is standard or not?	4

Feedback Rate: Excellent - 4, Good - 3, Moderate - 2, Poor - 1

Suggestions for further Improvement

C. Rajeswari 16/9/22
Faculty Sign