



EXCEL ENGINEERING COLLEGE

(Autonomous)

Approved by AICTE, New Delhi & Affiliated to Anna University, Chennai
Accredited by NBA (AERO, CSE, ECE, MECH), NAAC with "A+" and Recognised by UGC (2f & 12B)

KOMARAPALAYAM-637 303

DEPARTMENT OF BIOMEDICAL ENGINEERING

Academic Year 2022-23

CONSOLIDATED SYLLABUS REVIEW FEEDBACK FORM: ALUMNI

EEC / BME / 2022-23

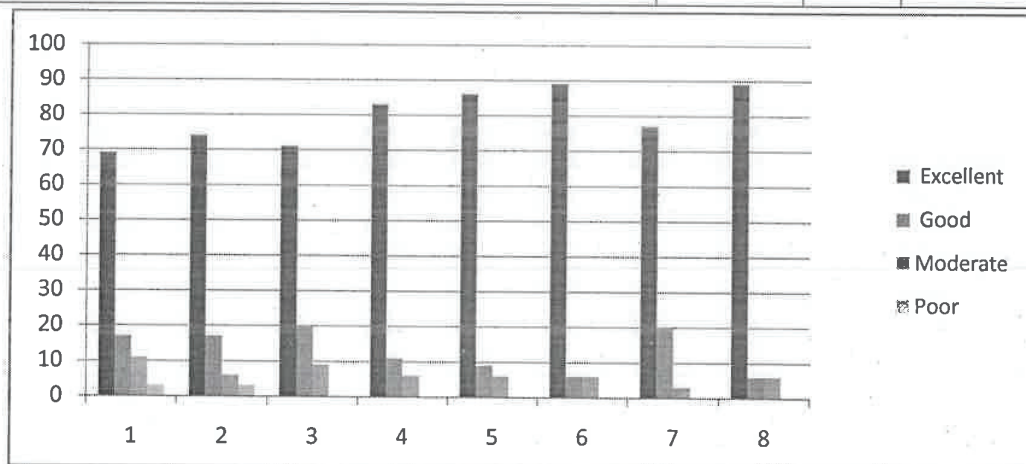
Date: 17-05-2023

Regulation of study: R 2020

Batch: 2019-23

No of responses: 35

S.No	Descriptions	Feedback in Percentage			
		Excellent	Good	Moderate	Poor
1	Were the courses well-structured to achieve course outcomes?	69	17	11	3
2	Did the courses enable you to build your future career?	74	17	6	3
3	Have the courses enabled the skills required by the industry?	71	20	9	0
4	Rate the depth of knowledge about the courses.	83	11	6	0
5	Is the course sufficient to enable the students to analyze and identify the necessary solutions?	86	9	6	0
6	Rate the syllabus and curriculum.	89	6	6	0
7	Are the relevant books prescribed for reference/text?	77	20	3	0
8	Do the courses provide a good balance between theory and application?	89	6	6	0




Academic Coordinator




HOD



EXCEL ENGINEERING COLLEGE

(Autonomous)

AICTE, New Delhi & Affiliated to Anna University, Chennai
Accredited by NBA (AERO, CSE, ECE, MECH), NAAC with "A+" and Recognised by
UGC (2f & 12B)

KOMARAPALAYAM-637 303

DEPARTMENT OF BIOMEDICAL ENGINEERING

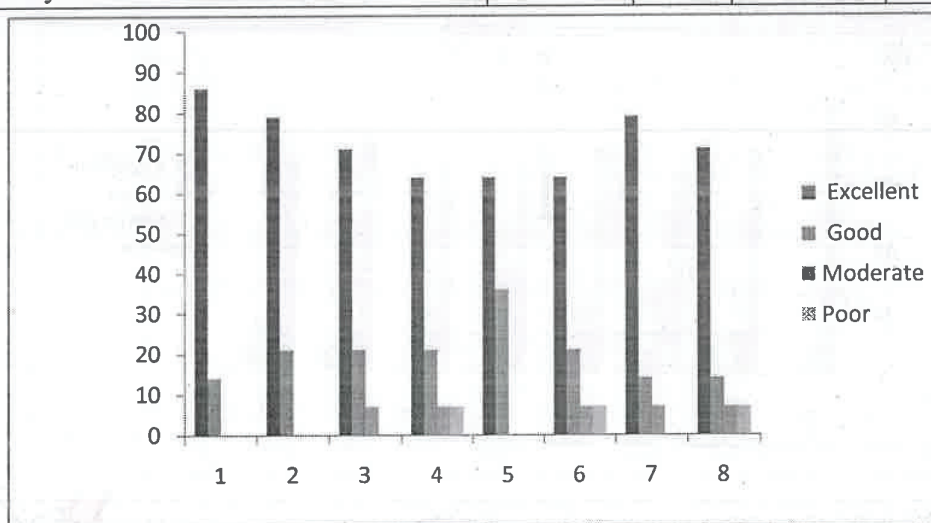
Academic Year: - 2022-23

CONSOLIDATED SYLLABUS REVIEW FEEDBACK FORM: FACULTY

EEC / BME/ 2022-23

Year /Sem: II/III

No of Faculty Responses: 14		Feedback in Percentage			
S.No	Descriptions	Excellent	Good	Moderate	Poor
1	Are the course objectives illustrated clearly to the needs of the students?	86	14	0	0
2	Are you satisfied with the existing syllabus which you are handling?	79	21	0	0
3	Is the syllabus designed based on the average student level?	71	21	7	0
4	Does the syllabus provide the basic knowledge to carry out the field project/internship?	64	21	7	7
5	Is the prerequisite for the syllabus available in the curriculum?	64	36	0	0
6	Is the syllabus well-organized and easy to follow by the students?	64	21	7	7
7	Is syllabus covers fundamentals and advanced topics and ensures a balance between theory & applications.	79	14	7	0
8	Is the text and Reference books prescribed in the syllabus is standard or not?	71	14	7	7



Academic Coordinator



HOD



EXCEL ENGINEERING COLLEGE
(Autonomous)

Approved by AICTE, New Delhi, affiliated to Anna University, Chennai
Accredited by NBA (AERO, CSE, ECE, MECH), NAAC with "A+" and Recognised by UGC (2f & 12B)

KOMARAPALAYAM-637 303
DEPARTMENT OF BIOMEDICAL ENGINEERING

Academic Year: - 2022-23

CONSOLIDATED SYLLABUS REVIEW FEEDBACK FORM: FACULTY

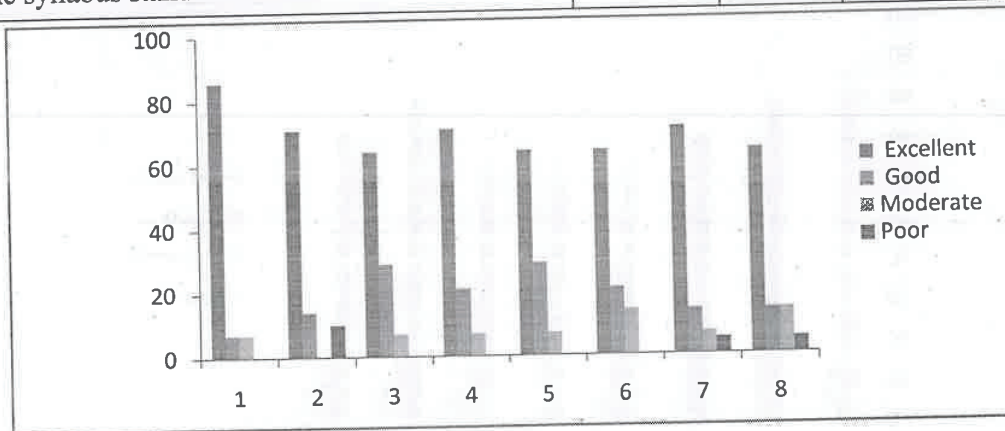
EEC / BME/ 2022-23

Year /Sem: II/IV

No of Faculty Responses: 14

Feedback in Percentage

S.No	Descriptions	Excellent	Good	Moderate	Poor
1	Are the course objectives illustrated clearly to the needs of the students?	86	7	7	0
2	Are you satisfied with the existing syllabus which you are handling?	71	14	0	10
3	Is the syllabus designed based on the average student level?	64	29	7	0
4	Is the syllabus provide the basic knowledge to carry out the field project/internship?	71	21	7	0
5	Is the prerequisite for the syllabus available in the curriculum?	64	29	7	0
6	Is the syllabus well-organized and easy to follow by the students?	64	21	14	0
7	Is the syllabus cover fundamentals and advanced topics and ensure a balance between theory & applications?	71	14	7	5
8	Is the text and Reference books prescribed in the syllabus standard or not?	64	14	14	5



Academic Coordinator



HOD



EXCEL ENGINEERING COLLEGE

(Autonomous)

Approved by AICTE, New Delhi & Affiliated to Anna University, Chennai
Accredited by NBA (AERO, CSE, ECE, MECH), NAAC with "A+" and Recognised by UGC (2f & 12B)

KOMARAPALAYAM-637 303

DEPARTMENT OF BIOMEDICAL ENGINEERING

Academic Year: - 2022-23

CONSOLIDATED SYLLABUS REVIEW FEEDBACK FORM: FACULTY

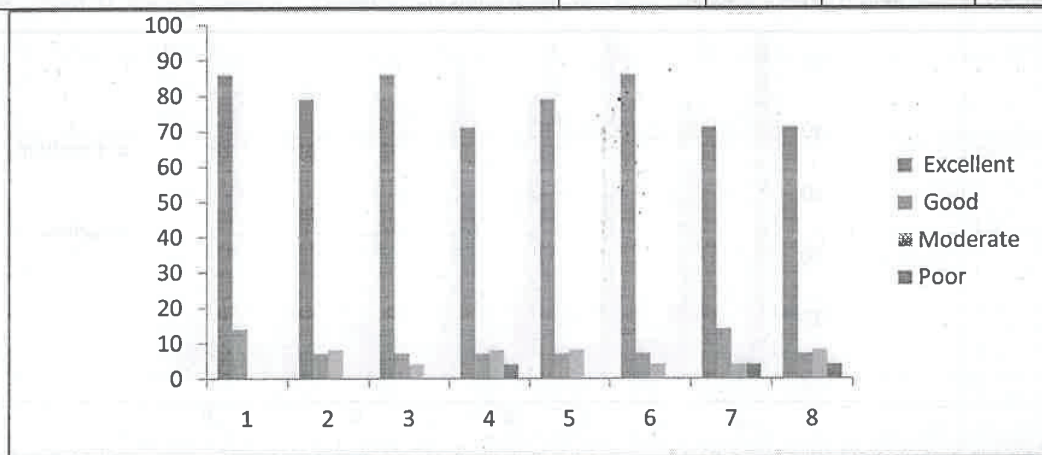
EEC / BME/ 2022-23

Year /Sem: III/V

No of Faculty Responses: 14

Feedback in Percentage

S.No	Descriptions	Excellent	Good	Moderate	Poor
1	Is the course objectives illustrated clearly to the need of the students?	86	14	0	0
2	Are you satisfied with the existing syllabus which you are handling?	79	7	8	0
3	Is the syllabus designed based on the average student level?	86	7	4	0
4	Is the syllabus provide the basic knowledge to carry out the field project/internship?	71	7	8	4
5	Is the prerequisite for the syllabus available in the curriculum?	79	7	8	0
6	Is the syllabus well-organized and easy to follow by the students?	86	7	4	0
7	Does the syllabus cover fundamentals advanced topics and ensure balance between theory & applications?	71	14	4	4
8	Is the text and Reference books prescribed in the syllabus is standard or not?	71	7	8	4



Academic Coordinator

HOD



EXCEL ENGINEERING COLLEGE

(Autonomous)

Approved by AICTE, New Delhi & Affiliated to Anna University, Chennai
Accredited by NBA (AERO, CSE, ECE, MECH), NAAC with "A+" and Recognised by UGC (2f & 12B)

KOMARAPALAYAM-637 303

DEPARTMENT OF BIOMEDICAL ENGINEERING

Academic Year: - 2022-23

CONSOLIDATED SYLLABUS REVIEW FEEDBACK FORM: FACULTY

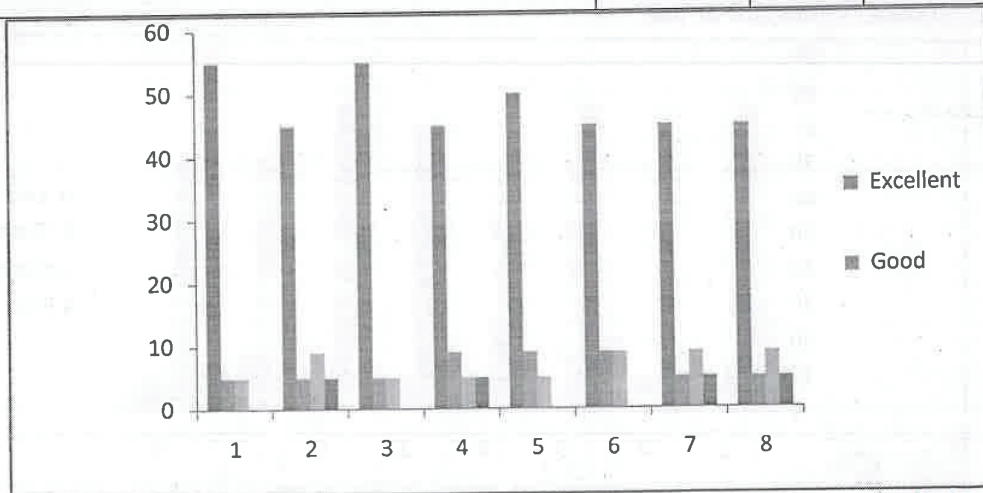
EEC / BME/ 2022-23

Year /Sem: III/VI

No of Faculty Responses: 14

Feedback in Percentage

S.No	Descriptions	Excellent	Good	Moderate	Poor
1	Are the course objectives illustrated clearly to the needs of the students?	55	5	5	0
2	Are you satisfied with the existing syllabus which you are handling?	45	5	9	5
3	Is the syllabus designed based on the average student level?	55	5	5	0
4	Does the syllabus provide the basic knowledge to carry out the field project/internship?	45	9	5	5
5	Is the prerequisite for the syllabus available in the curriculum?	50	9	5	0
6	Is the syllabus well-organized and easy to follow by the students?	45	9	9	0
7	Does the syllabus cover fundamental advanced topics and ensure a balance between theory and applications?	45	5	9	5
8	Are the text and Reference books prescribed in the syllabus standard or not?	45	5	9	5



Academic Coordinator



HOD



EXCEL ENGINEERING COLLEGE

(Autonomous)

Approved by AICTE, New Delhi & Affiliated to Anna University, Chennai
Accredited by NBA (AERO, CSE, ECE, MECH), NAAC with "A+" and Recognised by UGC (2f & 12B)

KOMARAPALAYAM-637 303

DEPARTMENT OF BIOMEDICAL ENGINEERING

Academic Year: - 2022-23

CONSOLIDATED SYLLABUS REVIEW FEEDBACK FORM: FACULTY

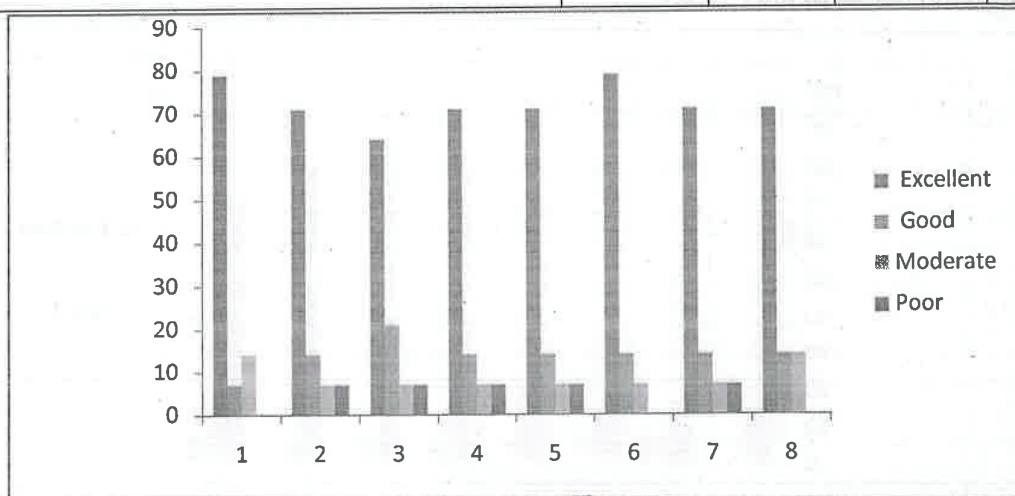
EEC/BME/2022-23

Year /Sem: IV/VII

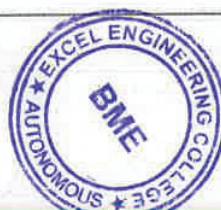
No of Faculty Responses: 14

Feedback in Percentage

S.No	Descriptions	Excellent	Good	Moderate	Poor
1	Are the course objectives illustrated clearly to the needs of the students?	79	7	14	0
2	Are you satisfied with the existing syllabus which you are handling?	71	14	7	7
3	Is the syllabus designed based on the average student level?	64	21	7	7
4	Does the syllabus provide the basic knowledge to carry out the field project/internship?	71	14	7	7
5	Is the prerequisite for the syllabus available in the curriculum?	71	14	7	7
6	Is the syllabus well-organized and easy to follow by the students?	79	14	7	0
7	Does the syllabus cover fundamentals and advanced topics and ensure a balance between theory and applications?	71	14	7	7
8	Is the text and Reference books prescribed in the syllabus standard or not?	71	14	14	0



Academic Coordinator



HOD



EXCEL ENGINEERING COLLEGE

(Autonomous)

Approved by AICTE, New Delhi & Affiliated to Anna University, Chennai
Accredited by NBA (AERO, CSE, ECE, MECH), NAAC with "A+" and Recognised by UGC (2f & 12B)

KOMARAPALAYAM-637 303

DEPARTMENT OF BIOMEDICAL ENGINEERING

Academic Year: - 2022-23

CONSOLIDATED SYLLABUS REVIEW FEEDBACK FORM: FACULTY

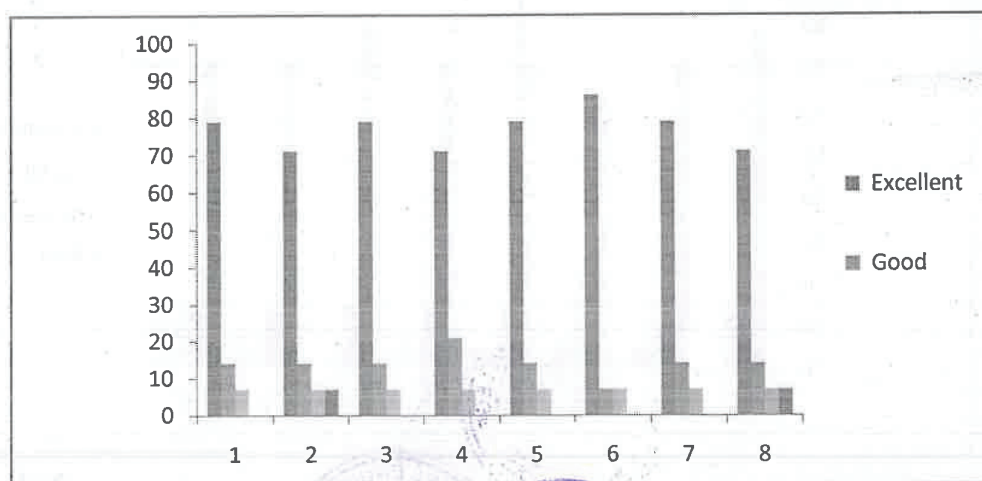
EEC / BME/ 2022-23

Year /Sem: IV/VIII

No of Faculty Responses: 14

Feedback in Percentage

S.No	Descriptions	Excellent	Good	Moderate	Poor
1	Are the course objectives illustrated clearly to the needs of the students?	79	14	7	0
2	Are you satisfied with the existing syllabus that you are handling?	71	14	7	7
3	Is the syllabus designed based on the average student level?	79	14	7	0
4	Does the syllabus provide the basic knowledge to carry out the field project/internship?	71	21	7	0
5	Is the prerequisite for the syllabus available in the curriculum?	79	14	7	0
6	Is the syllabus well-organized and easy to follow by the students?	86	7	7	0
7	Does the syllabus cover fundamentals and advanced topics and ensure a balance between theory and applications?	79	14	7	0
8	Are the text and Reference books prescribed in the syllabus standard or not?	71	14	7	7



Academic Coordinator



HOD



EXCEL ENGINEERING COLLEGE

(Autonomous)

Approved by AICTE, New Delhi & Affiliated to Anna University, Chennai
Accredited by NBA (AERO, CSE, ECE, MECH), NAAC with "A+" and Recognised by UGC
(2f & 12B)

KOMARAPALAYAM-637 303

DEPARTMENT OF BIOMEDICAL ENGINEERING

Academic Year: -2022-23

CONSOLIDATED SYLLABUS REVIEW FEEDBACK FORM: STUDENTS

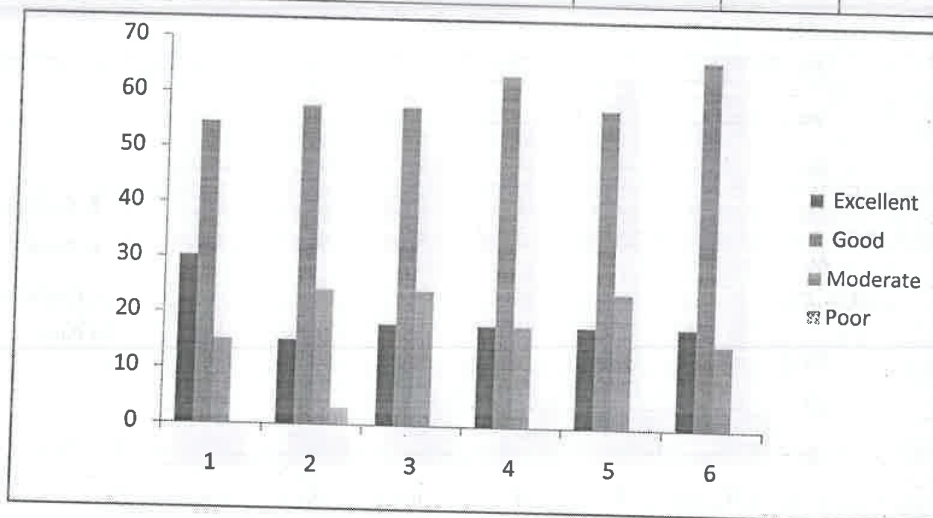
EEC /BME /2022-23

Year /Sem: II/III

No of Responses: 33

No of Subjects: 8

S.No	Descriptions	Feedback in Percentage			
		Excellent	Good	Moderate	Poor
1	Is the Syllabus career oriented?	30	55	15	0
2	Is the Course objective clear?	15	58	24	3
3	Is the course well-structured to achieve course outcomes?	18	58	24	0
4	Rate the content of the syllabus in terms of quantity.	18	64	18	0
5	Scale the Content of syllabus available in the prescribed Standard text/reference books.	18	58	24	0
6	Does the syllabus cover with industry standards?	18	67	15	0



Academic Coordinator



HOD



EXCEL ENGINEERING COLLEGE

(Autonomous)

Approved by AICTE, New Delhi & Affiliated to Anna University, Chennai
Accredited by NBA (AERO, CSE, ECE, MECH), NAAC with "A+" and Recognised by UGC
(2f & 12B)

KOMARAPALAYAM-637 303

DEPARTMENT OF BIOMEDICAL ENGINEERING

Academic Year: -2022-23

CONSOLIDATED SYLLABUS REVIEW FEEDBACK FORM: STUDENTS

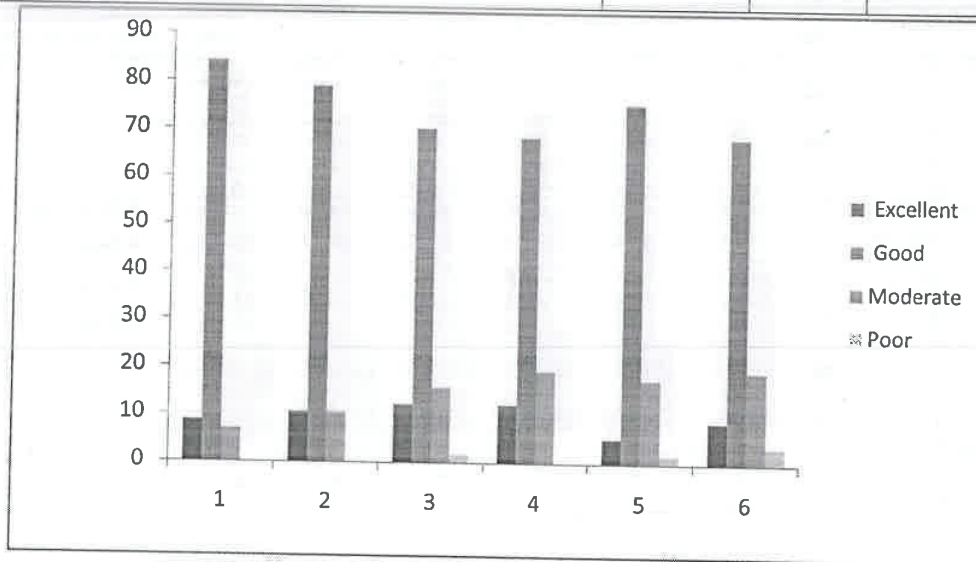
EEC /BME / 2022-23

Year /Sem: II/IV

No of Responses: 57

No of Subjects: 8

S.No	Descriptions	Feedback in Percentage			
		Excellent	Good	Moderate	Poor
1	Is the Syllabus career oriented?	9	84	7	0
2	Is the Course objective clear?	11	79	10	0
3	Is the course well-structured to achieve course outcomes?	12	70	16	2
4	Rate the content of the syllabus in terms of quantity.	12	68	19	0
5	Scale the Content of syllabus available in the prescribed Standard text/reference books.	5	75	18	2
6	Does the syllabus cover with industry standards?	9	68	19	4



Academic Coordinator



HOD





EXCEL ENGINEERING COLLEGE (Autonomous)

Approved by AICTE, New Delhi & Affiliated to Anna University, Chennai
Accredited by NBA (AERO, CSE, ECE, MECH), NAAC with "A+" and Recognised
by UGC (2f & 12B)

KOMARAPALAYAM-637 303
DEPARTMENT OF BIOMEDICAL ENGINEERING

Academic Year: -2022-23

CONSOLIDATED SYLLABUS REVIEW FEEDBACK FORM: STUDENTS

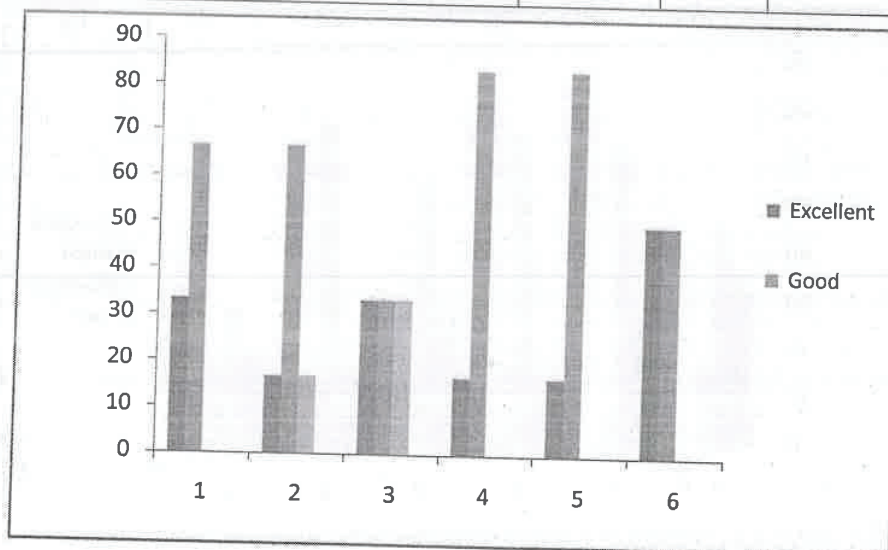
EEC /BME / 2022-23

Year /Sem: III/V

No of Responses: 6

No of Subjects: 8

S.No	Descriptions	Feedback in Percentage			
		Excellent	Good	Moderate	Poor
1	Is the Syllabus career oriented?	33	67	0	0
2	Is the Course objective clear?	17	67	16	0
3	Is the course well-structured to achieve course outcomes?	33	33	34	0
4	Rate the content of the syllabus in terms of quantity.	17	83	0	0
5	Scale the Content of syllabus available in the prescribed Standard text/reference books.	17	83	0	0
6	Does the syllabus covered with industry standards?	50	50	0	0



[Signature]
Academic Coordinator



[Signature]
HOD



EXCEL ENGINEERING COLLEGE

(Autonomous)

Approved by AICTE, New Delhi & Affiliated to Anna University, Chennai
Accredited by NBA (AERO, CSE, ECE, MECH), NAAC with "A+" and Recognised by
UGC (2f & 12B)

KOMARAPALAYAM-637 303

DEPARTMENT OF BIOMEDICAL ENGINEERING

Academic Year: -2022-23

CONSOLIDATED SYLLABUS REVIEW FEEDBACK FORM: STUDENTS

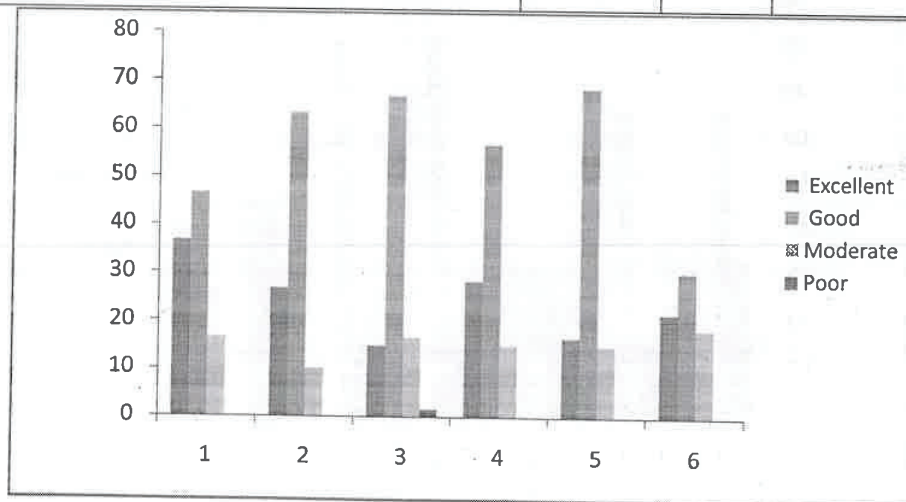
EEC /BME / 2022-23

Year /Sem: III/VI

No of Responses: 60

No of Subjects: 8

S.No	Descriptions	Feedback in Percentage			
		Excellent	Good	Moderate	Poor
1	Is the Syllabus career oriented?	37	47	16	0
2	Is the Course objective clear?	27	63	10	0
3	Is the course well-structured to achieve course outcomes?	15	67	17	2
4	Rate the content of the syllabus in terms of quantity.	28	57	15	0
5	Scale the Content of the syllabus available in the prescribed Standard text/reference books.	17	68	15	0
6	Does the syllabus cover industry standards?	22	30	18	0



Academic Coordinator



HOD



EXCEL ENGINEERING COLLEGE

(Autonomous)

Approved by AICTE, New Delhi & Affiliated to Anna University, Chennai
Accredited by NBA (AERO, CSE, ECE, MECH), NAAC with "A+" and Recognised by UGC
(2f & 12B)

KOMARAPALAYAM-637 303

DEPARTMENT OF BIOMEDICAL ENGINEERING

Academic Year: -2022-23

CONSOLIDATED SYLLABUS REVIEW FEEDBACK FORM: STUDENTS

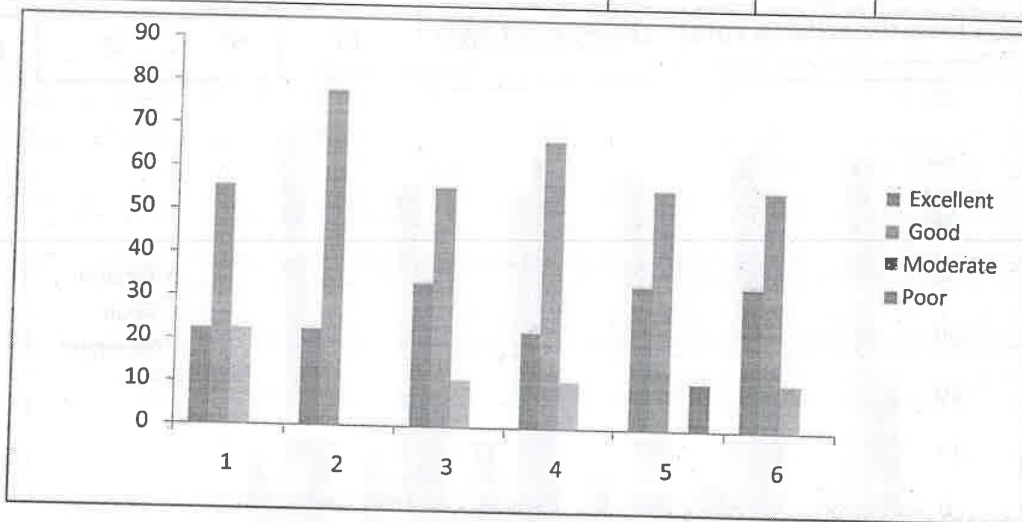
EEC /BME / 2022-23

Year /Sem: IV/VII

No of Responses: 9

No of Subjects: 8

S.No	Descriptions	Feedback in Percentage			
		Excellent	Good	Moderate	Poor
1	Is the Syllabus career oriented?	22	56	22	0
2	Is the Course objective clear?	22	78	0	0
3	Is the course well-structured to achieve course outcomes?	33	56	11	0
4	Rate the content of the syllabus in terms of quantity.	22	67	11	0
5	Scale the Content of the syllabus available in the prescribed Standard text/reference books.	33	56	0	11
6	Does the syllabus cover industry standards?	33	56	11	0



Academic Coordinator



HOD



EXCEL ENGINEERING COLLEGE

(Autonomous)

Approved by AICTE, New Delhi & Affiliated to Anna University, Chennai
Accredited by NBA (AERO, CSE, ECE, MECH), NAAC with "A+" and Recognised by
UGC (2f & 12B)

KOMARAPALAYAM-637 303

DEPARTMENT OF BIOMEDICAL ENGINEERING

Academic Year: -2022-23

CONSOLIDATED SYLLABUS REVIEW FEEDBACK FORM: STUDENTS

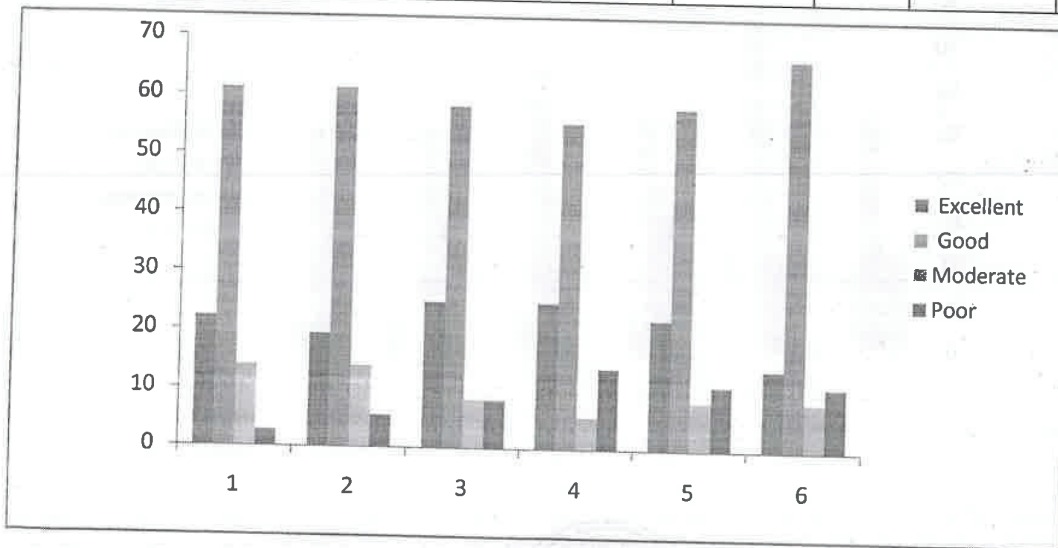
EEC /BME / 2022-23

Year /Sem: IV/VIII

No of Responses: 36

No of Subjects: 3

S.No	Descriptions	Feedback in Percentage			
		Excellent	Good	Moderate	Poor
1	Is the Syllabus career oriented?	22	61	14	3
2	Is the Course objective clear?	19	61	14	6
3	Is the course well-structured to achieve course outcomes?	25	58	8	8
4	Rate the content of the syllabus in terms of quantity.	25	56	6	14
5	Scale the Content of the syllabus available in the prescribed Standard text/reference books.	22	58	8	11
6	Does the syllabus cover industry standards?	14	67	8	11



Academic Coordinator



HOD



EXCEL ENGINEERING COLLEGE

(Autonomous)

Approved by AICTE, New Delhi & Affiliated to Anna University, Chennai

Accredited by NBA (AERO, CSE, ECE, MECH), NAAC with "A+" and Recognised by UGC (2f & 12B)

KOMARAPALAYAM-637 303

DEPARTMENT OF BIOMEDICAL ENGINEERING

Academic Year 2022-23

CONSOLIDATED SYLLABUS REVIEW FEEDBACK FORM: EMPLOYER

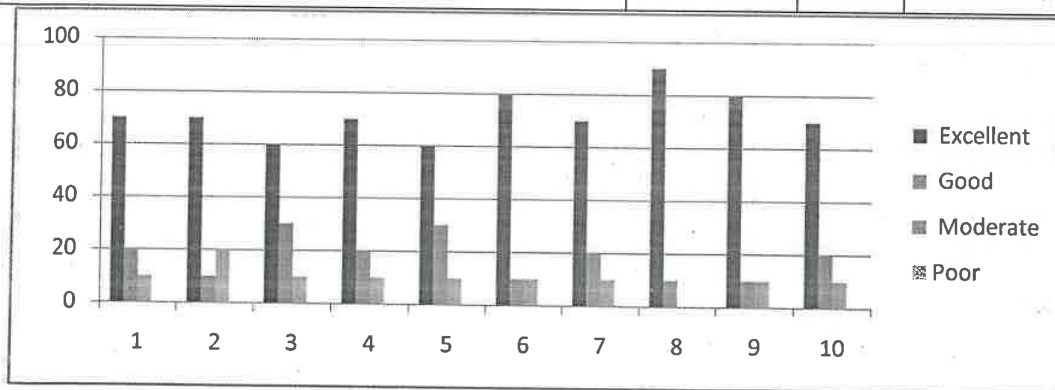
EEC/ BME/ 2022-23

Date: 18-10-2023

Feedback Rate: Excellent 4, Good 3, Moderate 2, Poor 1

No of Responses: 10

S.No	Descriptions	Feedback in Percentage			
		Excellent	Good	Moderate	Poor
1	Can the course add learning values, professional ethics, and human values to students?	70	20	10	0
2	Is our syllabus compatible with real-world problems?	70	10	20	0
3	What efforts are required of the students to learn the syllabus?	60	30	10	0
4	Rate the depth of knowledge about the courses.	70	20	10	0
5	Does the syllabus meet the industrial standards?	60	30	10	0
6	Is the syllabus building the students to be readily employable without training?	80	10	10	0
7	Is the syllabus sufficient to analyze engineering problems and solutions?	70	20	10	0
8	Do the courses provide a good balance between theory and application?	90	10	0	0
9	The syllabus helps the students work in a team and lead the team.	80	10	10	0
10	Does the syllabus meet the expectations of the industry?	70	20	10	0



Academic Coordinator



HOD