



EXCEL ENGINEERING COLLEGE

(Autonomous)

Approved by AICTE, New Delhi & Affiliated to Anna University, Chennai
Accredited by NBA (AERO, CSE, ECE, MECH), NAAC with "A+" and Recognised by UGC (2f & 12B)

KOMARAPALAYAM-637 303

DEPARTMENT OF MCA

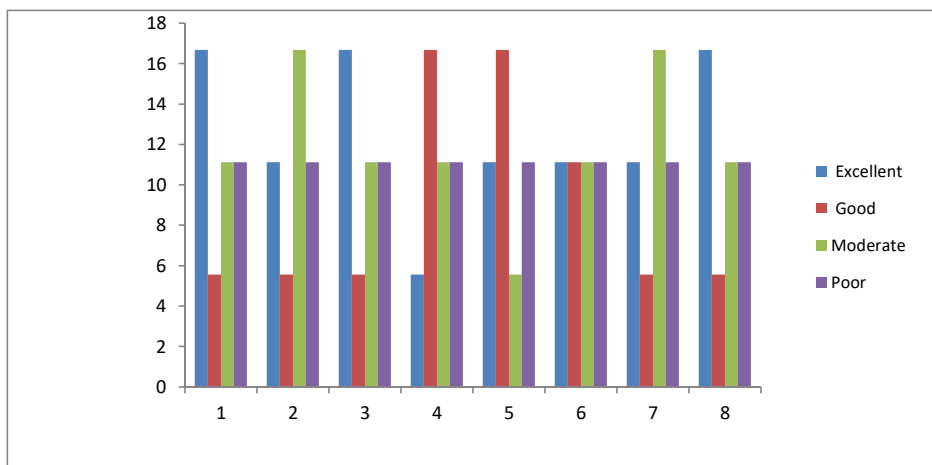
Academic Year 2021-2022

CONSOLIDATED SYLLABUS REVIEW FEEDBACK FORM : FACULTY

EEC / DEPT/ 2021-22

No of Faculty Responses : 8

S.No	Descriptions	Feedback in Percentage			
		Excellent	Good	Moderate	Poor
1	Is the course objectives are illustrated clearly to the need of the students?	17	6	11	11
2	Are you satisfy the existing syllabus which you are handling?	11	6	17	11
3	Is the syllabus designed based on average students level?	17	6	11	11
4	Is the syllabus provided the basic knowledge to carry out the field project/internship.	6	17	11	11
5	Is the prerequest for the syllabus available in the curriculum?	11	17	6	11
6	Is the syllabus well organized and easy to follow by the students?	11	11	11	11
7	Is the syllabus covered fundametals,advanced topics and ensures balance between theory & applications.	11	6	17	11
8	Is the text and Reference books prescribed in the syllabus is standard or not?	17	6	11	11



[Signature]

Faculty Incharge

[Signature]

HOD



EXCEL ENGINEERING COLLEGE

(Autonomous)

Approved by AICTE, New Delhi & Affiliated to Anna University, Chennai
Accredited by NBA (AERO, CSE, ECE, MECH), NAAC with "A+" and Recognised by UGC (2f & 12B)

KOMARAPALAYAM-637 303

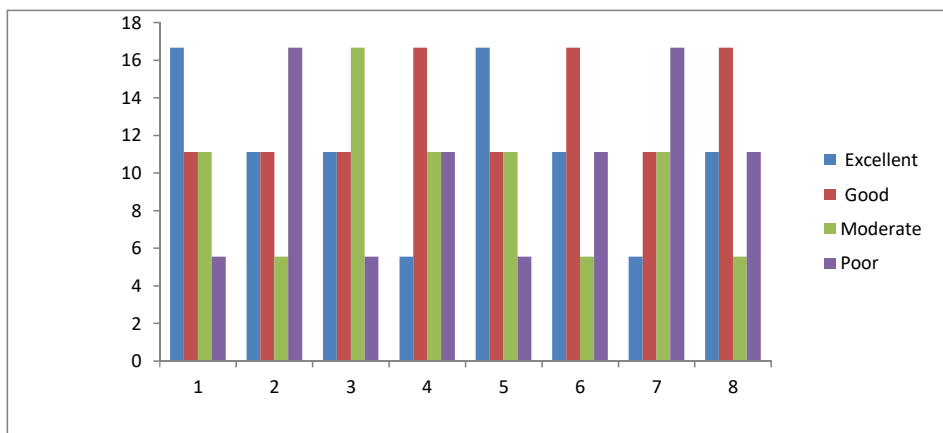
DEPARTMENT OF MCA

Academic Year 2021-2022

CONSOLIDATED SYLLABUS REVIEW FEEDBACK FORM : FACULTY

EEC / DEPT/ 2021-22

No of Faculty Responses : 8		Feedback in Percentage			
S.No	Descriptions	Excellent	Good	Moderate	Poor
1	Is the course objectives are illustrated clearly to the need of the students?	17	11	11	6
2	Are you satisfy the existing syllabus which you are handling?	11	11	6	17
3	Is the syllabus designed based on average students level?	11	11	17	6
4	Is the syllabus provided the basic knowledge to carry out the field project/internship.	6	17	11	11
5	Is the prerequest for the syllabus available in the curriculum?	17	11	11	6
6	Is the syllabus well organized and easy to follow by the students?	11	17	6	11
7	Is the syllabus covered fundametals,advanced topics and ensures balance between theory & applications.	6	11	11	17
8	Is the text and Reference books prescribed in the syllabus is standard or not?	11	17	6	11



S. Kumar

Faculty Incharge

Chennai

HOD



EXCEL ENGINEERING COLLEGE

(Autonomous)

Approved by AICTE, New Delhi & Affiliated to Anna University, Chennai

Accredited by NBA (AERO, CSE, ECE, MECH), NAAC with “A+” and Recognised by UGC (2f & 12B)

KOMARAPALAYAM-637 303

DEPARTMENT OF MCA

Academic Year 2021-2022

CONSOLIDATED SYLLABUS REVIEW FEEDBACK FORM : STUDENTS

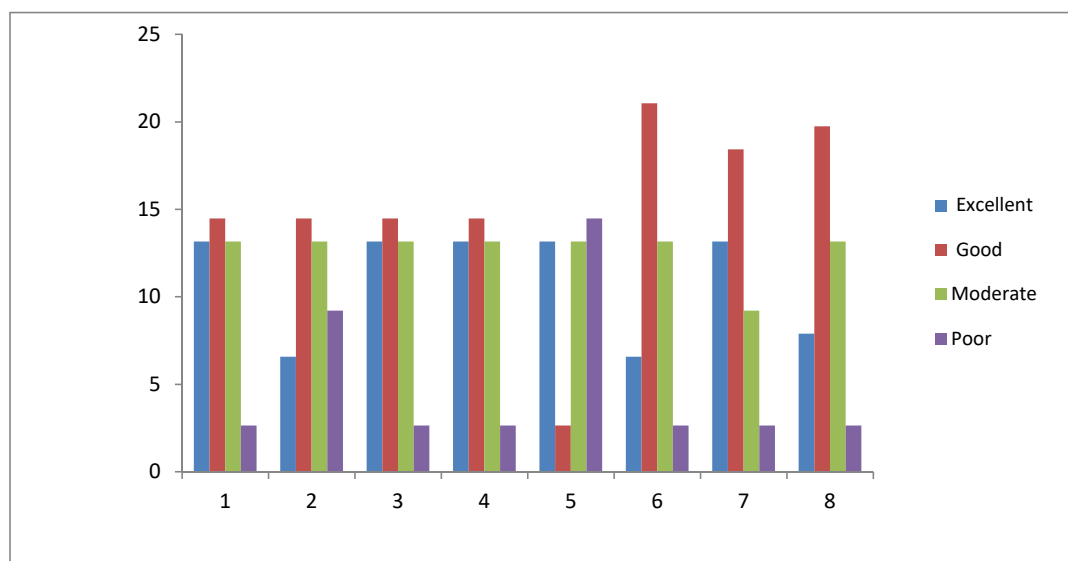
EEC /DEPT / 2021-22

Year /Sem : I/I

No of Responses : 33

No of Subjects : 7

S.No	Descriptions	Feedback in Percentage			
		Excellent	Good	Moderate	Poor
1	What is the Depth of the syllabus content ?	13	14	13	3
2	Whether Syllabus is carrier oriented?	7	14	13	9
3	Whether the course was well Structured to achieve course outcomes?	13	14	13	3
4	Rate the size of the syllabus in terms of students load	13	14	13	3
5	Whether Course objective is clear ?	13	3	13	14
6	Are the books prescribed as a text book/ Reference book in related to syllabus	7	21	13	3
7	Whether syllabus is relevant to real word problems?	13	18	9	3
8	Whether the syllabus is covered with industry standards?	8	20	13	3



G. Srinivas

Faculty Incharge

G. Srinivas

HOD



EXCEL ENGINEERING COLLEGE

(Autonomous)

Approved by AICTE, New Delhi & Affiliated to Anna University, Chennai

Accredited by NBA (AERO, CSE, ECE, MECH), NAAC with “A+” and Recognised by UGC (2f & 12B)

KOMARAPALAYAM-637 303

DEPARTMENT OF MCA

Academic Year 2021-2022

CONSOLIDATED SYLLABUS REVIEW FEEDBACK FORM : STUDENTS

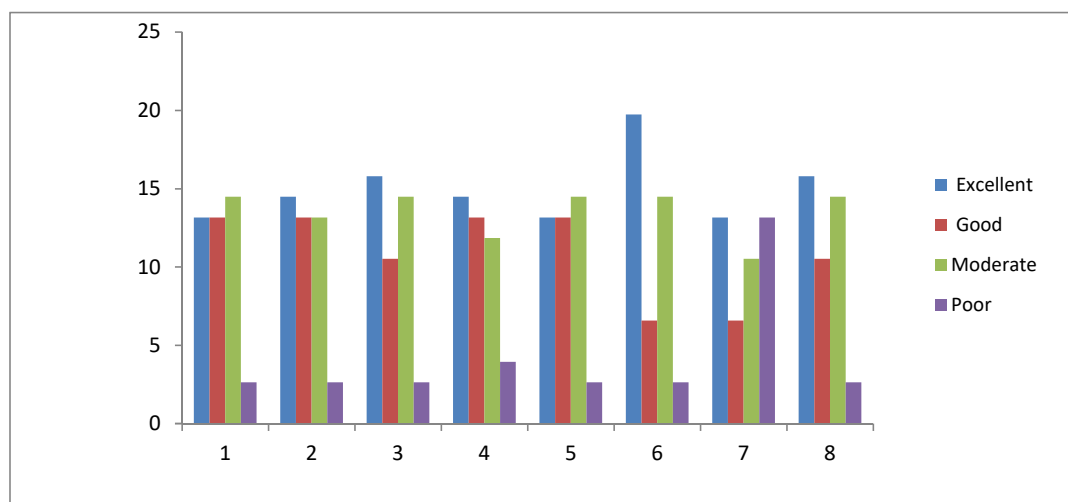
EEC /DEPT / 2021-22

Year /Sem : I/I

No of Responses : 33

No of Subjects : 7

S.No	Descriptions	Feedback in Percentage			
		Excellent	Good	Moderate	Poor
1	What is the Depth of the syllabus content ?	13	13	14	3
2	Whether Syllabus is carrier oriented?	14	13	13	3
3	Whether the course was well Structured to achieve course outcomes?	16	11	14	3
4	Rate the size of the syllabus in terms of students load	14	13	12	4
5	Whether Course objective is clear ?	13	13	14	3
6	Are the books prescribed as a text book/ Reference book in related to syllabus	20	7	14	3
7	Whether syllabus is relevant to real word problems?	13	7	11	13
8	Whether the syllabus is covered with industry standards?	16	11	14	3



[Signature]

Faculty Incharge

[Signature]

HOD



EXCEL ENGINEERING COLLEGE

(Autonomous)

Approved by AICTE, New Delhi & Affiliated to Anna University, Chennai
Accredited by NBA (AERO, CSE, ECE, MECH), NAAC with "A+" and Recognised by UGC (2f & 12B)
KOMARAPALAYAM - 637303

Department of MCA

Academic Year 2021-22

SYLLABUS REVIEW FEEDBACK FORM: FACULTY

Name of the Faculty :Dr.S.GUNASEKARAN
Designation :Professor

Date:2.02.22

S.No	Descriptions	Rating
1	Is the course objectives are illustrated clearly to the need of the students?	3
2	Are you satisfying the existing syllabus which you are handling?	4
3	Is the syllabus designed based on average student's level?	2
4	Is the syllabus provided the basic knowledge to carry out the field project/internship	4
5	Is the prerequisite for the syllabus available in the curriculum?	3
6	Is the syllabus well organized and easy to follow by the students?	4
7	Is the syllabus covered fundamentals, advanced topics and ensures balance between theory & applications	4
8	Is the text and Reference book prescribed in the syllabus is standard or not?	3

Feedback Rate: Excellent - 4, Good - 3, Moderate - 2, Poor - 1

Suggestions for further Improvement

need for more subject wise topics give to students
Yes All the subjects scheduled for curriculum


Faculty Sign



EXCEL ENGINEERING COLLEGE

(Autonomous)

Approved by AICTE, New Delhi & Affiliated to Anna University, Chennai
Accredited by NBA (AERO, CSE, ECE, MECH), NAAC with "A+" and Recognised by UGC (2f & 12B)

KOMARAPALAYAM - 637303

Department of MCA

Academic Year 2021-22

SYLLABUS REVIEW FEEDBACK FORM: STUDENT

Class / Sem / Year / Section: I/2021-22/MCA

Date: 2.02.22

S.No	Descriptions	Rating
1	What is the Depth of the syllabus content?	3
2	Whether Syllabus is carrier oriented?	3
3	Whether the course was well Structured to achieve course outcomes?	2
4	Rate the size of the syllabus in terms of students load	2
5	Whether Course objective is clear?	3
6	Are the books prescribed as a text book/ Reference book in related to syllabus?	3
7	Whether syllabus is relevant to real word problems?	3
8	Whether the syllabus is covered with industry standards?	2

Feedback Rate: Excellent - 4, Good - 3, Moderate - 2, Poor - 1

Suggestions for further Improvement

1. need for More practical hands on
2. practical session and advanced system needed
3. every semester needed internship
4. Advanced software needed


Student Sign