

DOCUMENTATION

ANDC 2021 - 22

LOCATION

Sankari or sankagiri is a panchayat town in salem district in the indian state of Tamil nadu. It is situated on the National highway 544 on coimbatore, salem section. It is also known as forts, lorries, lorry building industries.

LABOUR SHELTER



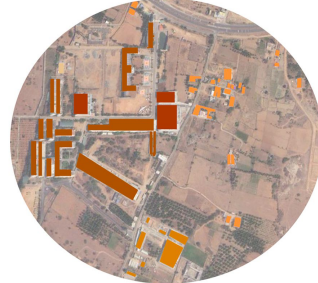
ABOUT

Temporary construction shelters prevent strong winds from picking up loose materials, as well as protect workers on the jobsite. A strong gust of wind can also increase the chances of workers without sufficient fall protection losing their balance on a construction site

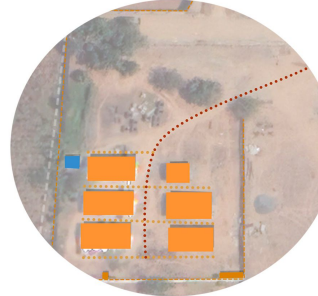
ROAD CONNECTIVITY



LAND USE



SITE CIRCULATION



PRESENT

It presently consists of labourers shelter for the purpose of construction work

HISTORY

It was an bare and vast land situated inside a village near kumarapalyam.

PROBLEM

No ventilation provided inside the shelter.
Minimum amount of daylight passed through the shelter
No service lines provided
Leakages in rainy season

INDIVIDUAL UNIT



AREA ANALYSIS

Shelter area : 14,569.47 sq ft
Site area : 25,317.22 sq ft
No. of shelter : 50
Unit dimensions : 20 ft x 40 ft
Veranda : 6 ft
Passage length : 16 ft
Passage width : 40 ft

USER ANALYSIS

No . of labourers : 100
Sex ratio : 3:1
No . of families : 15

CONSTRUCTION TECHNIQUES



Used T-joints for roof to support the corrugated GI sheets made of wood log



Used cement flooring for the floor



For the roof , a center truss has been used to hold the panels firm



Passage space between two units for circulation



Used column like wood logs to support the sun

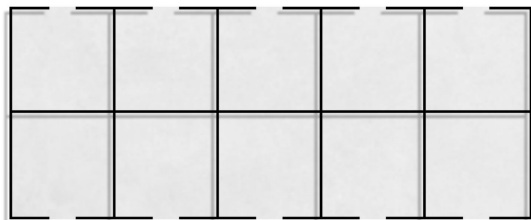
Registration code:

64ANDC-248

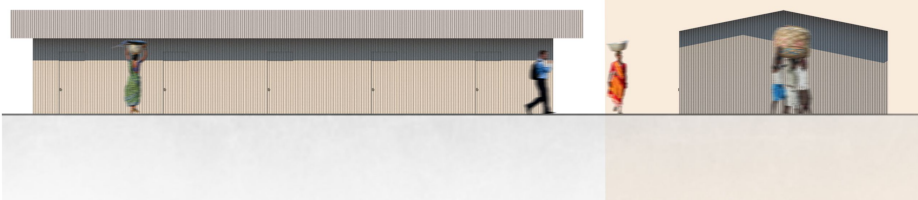


T YPE A

An individual unit consists of attached kitchen, bedroom space and a living space. An array of unit houses on both side of the passage for family of 3 to reside. There are about 5 individual units in a single



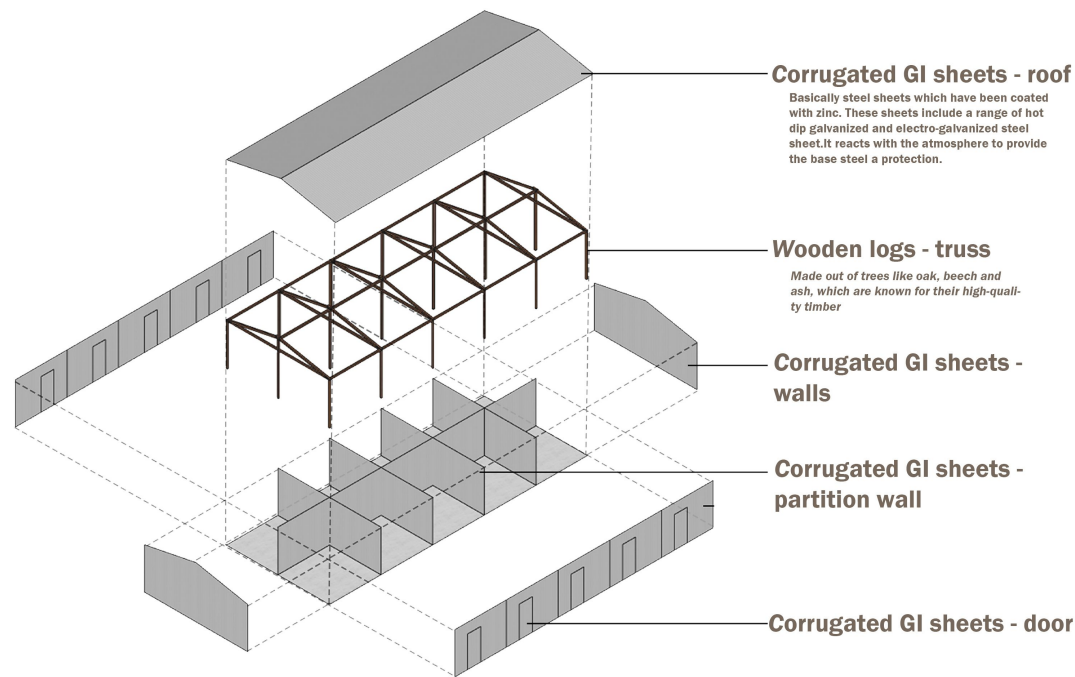
ELEVATION



SECTION



MATERIAL AND SPATIAL ANALYSIS

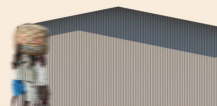
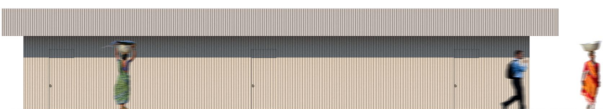


T TYPE B



A combined unit to serve as shelter for group of more than 10 members like a dormitory which consists of a kitchen, a living space and combined bedroom spaces. In addition to that, extra space is used for laundry and also as a stock room in case of any need in construction site.

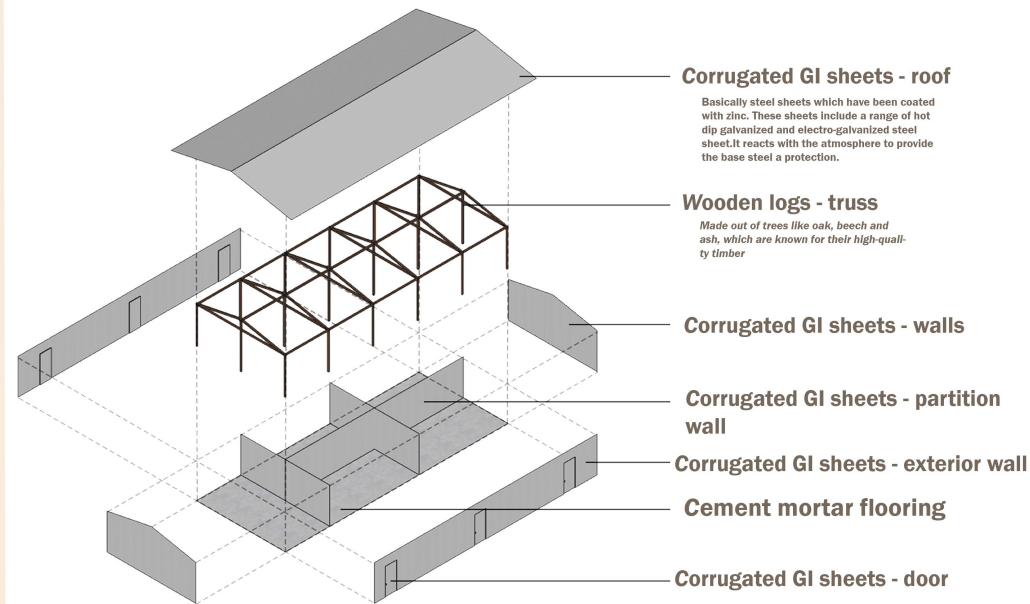
ELEVATION



SECTION



MATERIAL AND SPATIAL ANALYSIS

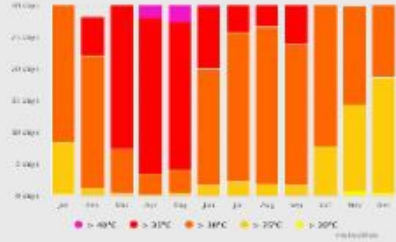


Registration code:
64ANDC-248

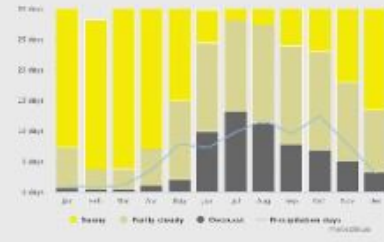


CLIMATE STUDY

MAXIMUM TEMPERATURES



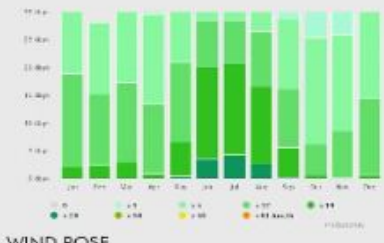
CLOUDY, SUNNY, AND PRECIPITATION DAYS



PRECIPITATION AMOUNTS



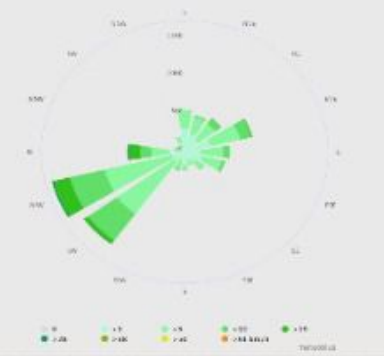
WIND SPEED



AVERAGE TEMPERATURES AND PRECIPITATION

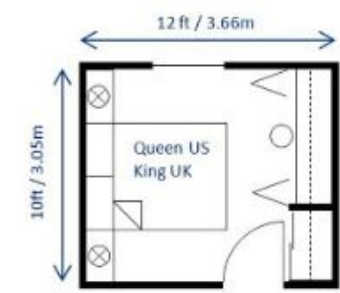
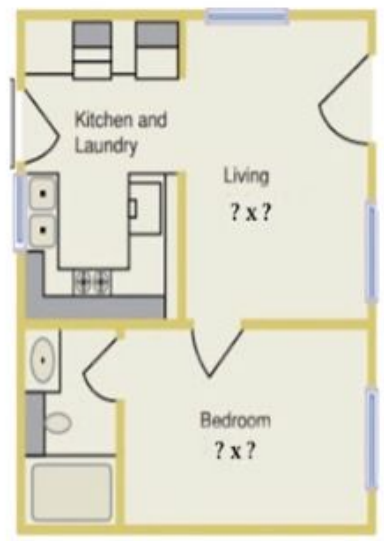
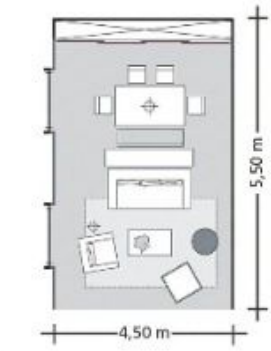
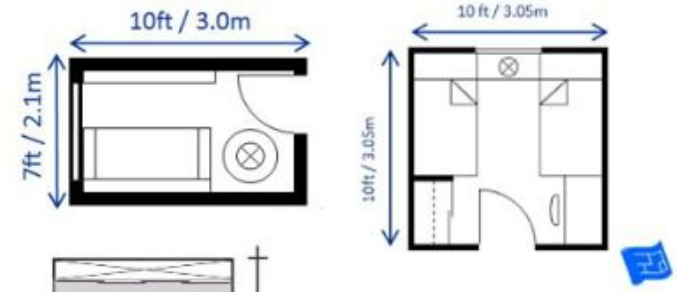


WIND ROSE



REQUIREMENTS

Property type	No. of Bedrooms	No. of People	Good Area (sq m)	Good Area (sq ft)
studio	1	2	37	400
	1	3	50	540
	2	3	61	660
	2	4	70	750
	3	4	74	790
single story terrace or duplex	3	2	66	710
	3	3	77	830
	3	4	88	940
	4	5	99	1070
	4	6	110	1180
two story terrace or duplex flat	2	4	85	910
	3	4	97	1050
	3	5	105	1130
	4	5	100	1075
	4	6	107	1150
three story terrace	3	5	102	1100
	4	5	106	1140
	4	6	112	1210



Registration code:
64ANDC-248





Registration
code:
64ANDC-248



ADAPTABALE CONTAINER SHELTER

Temporary shelters and mobile construction shelters provide an inviting, dry environment that people enjoy working in.

These are robust and durable temporary shelters which are designed to be portable. Therefore it is easy to relocate and reuse your temporary shelter across your construction site as your needs change. Consequently our mobile construction shelters provide economical solutions when compared to traditional buildings

NEED ?

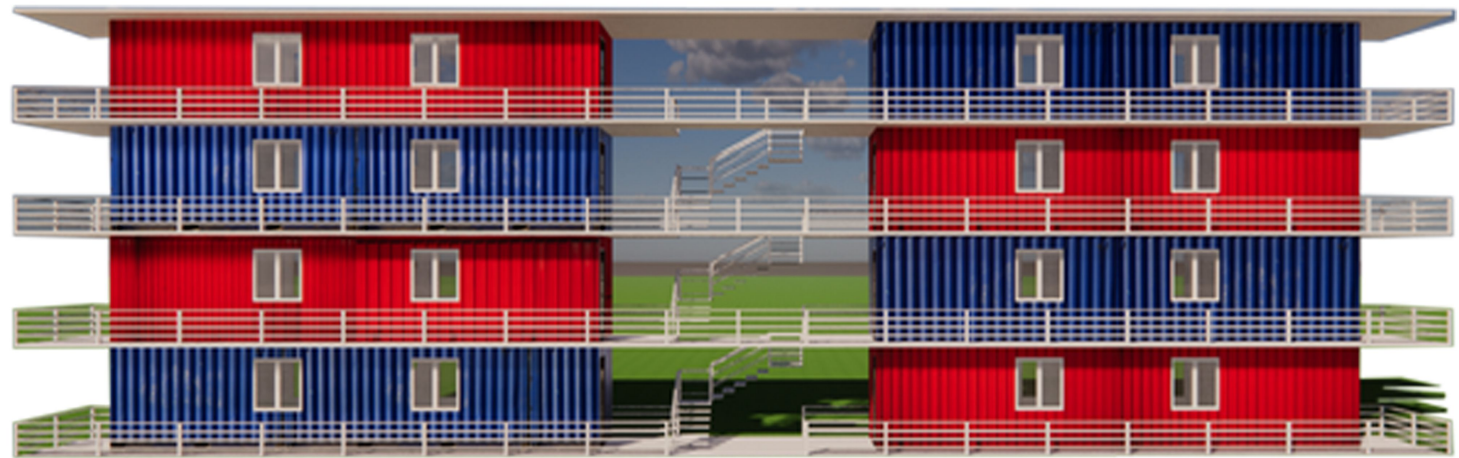
It do not require any additional pillars, reinforcement, pillars, walls

They are corrugated steel boxes

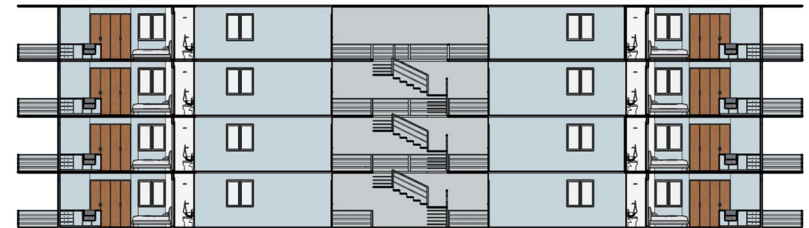
It has high tensile strength, tear strength and abrasion resistance.

It is cheap, strong, durable, green and independent

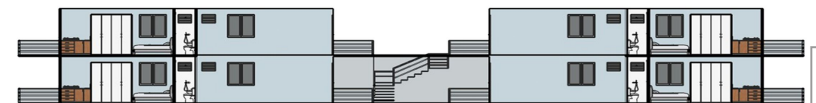
ELEVATION



PERSPECTIVE VIEW

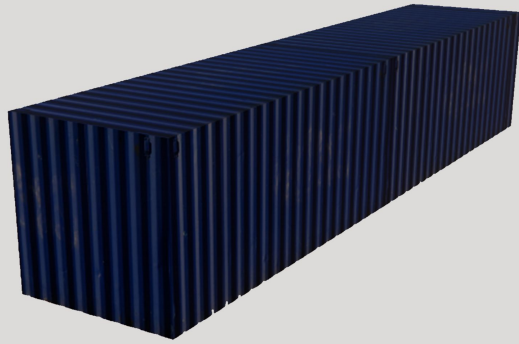


SECTION - BB'



SECTION - AA'

Registration code:
64ANDC-248



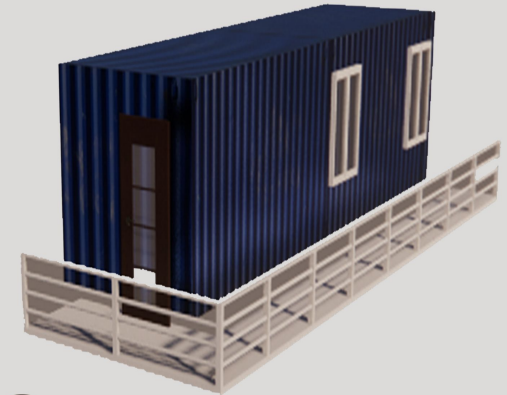
STEP - 1

Choose an area to install your container shelter, it's important to pick an area that is reasonably flat. The flatter the area, the easier your container shelter will be to install



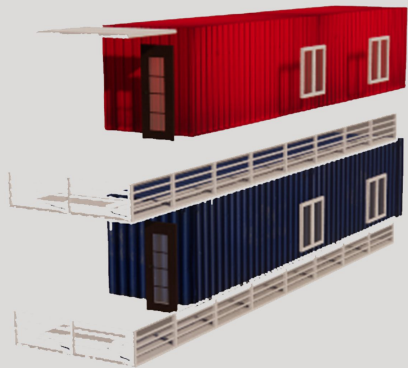
STEP - 2

Openings for windows and doors are cut into container. All openings for windows and doors should be framed with a steel section. Sliding and hinged type windows are commonly used, made of wood, aluminium, upvc, pvc



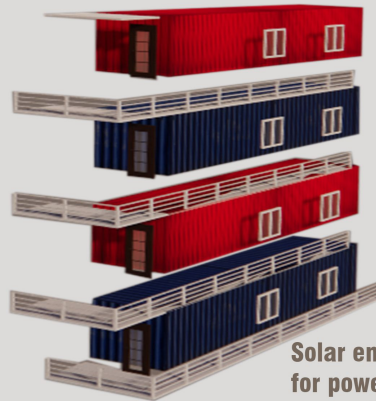
STEP - 3

Steel slab is provided fully under the container. Under side of the container will not get rusted



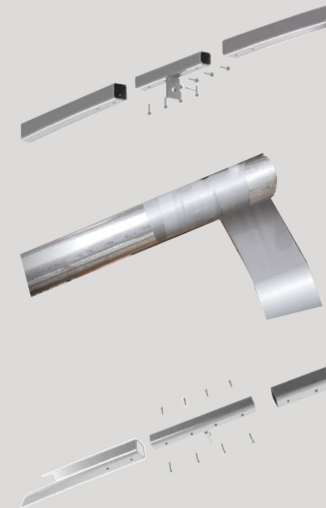
STEP - 4

Stack the container when in need and pre-fabricated staircases for transportation



STEP - 5

Solar energy and general electricity are used for power supply. It is delivered via nonmetallic sheath wire run inside pvc pipes. Pvc pipes are used for water distribution, sewage disposal



position screws on underside and inside edge

Apply a protective layer (i.e duct tape) over any joints, screws/bolts and sharp edges. This extra step will be added protection and will prevent damage of the cover when it's pulled over in the next stage

position screws on inside

Registration code:
64ANDC-248

